

Datasheet for ABIN6747452
anti-SEMA4D/CD100 antibody (AA 90-139)



[Go to Product page](#)

1 Image

Overview

Quantity:	100 µL
Target:	SEMA4D/CD100 (SEMA4D)
Binding Specificity:	AA 90-139
Reactivity:	Human, Monkey, Guinea Pig, Rabbit, Horse, Bat, Pig
Host:	Rabbit
Clonality:	Polyclonal
Conjugate:	This SEMA4D/CD100 antibody is un-conjugated
Application:	Western Blotting (WB)

Product Details

Immunogen:	Synthetic peptide located between aa90-139 of human SEMA4D (Q92854-2, NP_001135759). Percent identity by BLAST analysis: Human, Chimpanzee, Gorilla, Gibbon, Monkey, Galago, Marmoset, Elephant, Bat, Rabbit, Horse, Pig, Guinea pig (100%), Mouse, Rat, Dog, Bovine (92%). Type of Immunogen: Synthetic peptide
Specificity:	Human SEMA4D
Predicted Reactivity:	Percent identity by BLAST analysis: Human, Rabbit, Horse, Pig, Guinea pig (100%) Mouse, Rat, Dog, Bovine (92%).
Purification:	Immunoaffinity purified

Target Details

Target:	SEMA4D/CD100 (SEMA4D)
Alternative Name:	SEMA4D / CD100 (SEMA4D Products)
Background:	Name/Gene ID: SEMA4D Synonyms: SEMA4D, A8, BB18, C9orf164, CD100 antigen, Coll-4, GR3, Semaphorin-4D, M-sema-G, SEMAJ, CD100
Gene ID:	10507
NCBI Accession:	NP_001135759
UniProt:	Q92854
Pathways:	Regulation of Cell Size

Application Details

Application Notes:	Optimal working dilution should be determined by the investigator.
Comment:	Target Species of Antibody: Human
Restrictions:	For Research Use only

Handling

Format:	Lyophilized
Reconstitution:	Distilled water
Concentration:	Lot specific
Buffer:	Lyophilized from PBS with 2 % sucrose
Handling Advice:	Avoid repeat freeze-thaw cycles.
Storage:	4 °C,-20 °C
Storage Comment:	Long term: -20°C, the use of 50% glycerol is recommended if storing aliquots in -20°C for long term use (up to 1 year) Short term (less than 1 week): 4°C. Avoid freeze-thaw cycles.

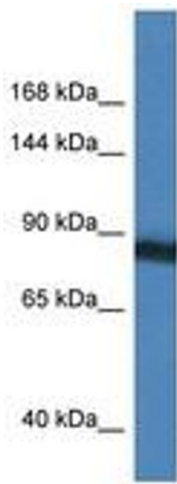


Image 1.