



Datasheet for ABIN6747467
anti-KCNIP2 antibody (AA 204-253)



[Go to Product page](#)

1 Image

Overview

Quantity:	100 µL
Target:	KCNIP2
Binding Specificity:	AA 204-253
Reactivity:	Human, Mouse, Rat, Dog, Guinea Pig, Horse, Rabbit, Cow, Pig, Monkey, Bat, Hamster
Host:	Rabbit
Clonality:	Polyclonal
Conjugate:	This KCNIP2 antibody is un-conjugated
Application:	Western Blotting (WB)

Product Details

Immunogen:	Synthetic peptide located between aa204-253 of human KCNIP2 (Q9NS61-6, NP_055406). Percent identity by BLAST analysis: Human, Chimpanzee, Gorilla, Monkey, Galago, Marmoset, Mouse, Rat, Ferret, Hamster, Elephant, Dog, Bovine, Bat, Rabbit, Horse, Pig, Opossum, Guinea pig (100%), Turkey, Zebra finch, Chicken, Platypus (92%), Xenopus (85%). Type of Immunogen: Synthetic peptide
Specificity:	Human KCNIP2 / KCHIP2
Predicted Reactivity:	Percent identity by BLAST analysis: Human, Mouse, Rat, Dog, Bovine, Rabbit, Horse, Pig, Guinea pig (100%) Chicken (92%).
Purification:	Immunoaffinity purified

Target Details

Target:	KCNIP2
Alternative Name:	KCNIP2 / KCHIP2 (KCNIP2 Products)
Background:	Name/Gene ID: KCNIP2 Subfamily: Potassium channel - interacting protein Family: Ion Channel Synonyms: KCNIP2, KCHIP2
Gene ID:	30819
NCBI Accession:	NP_055406
UniProt:	Q9NS61

Application Details

Application Notes:	Optimal working dilution should be determined by the investigator.
Comment:	Target Species of Antibody: Human
Restrictions:	For Research Use only

Handling

Format:	Lyophilized
Reconstitution:	Distilled water
Concentration:	Lot specific
Buffer:	Lyophilized from PBS with 2 % sucrose
Handling Advice:	Avoid repeat freeze-thaw cycles.
Storage:	4 °C,-20 °C
Storage Comment:	Long term: -20°C, the use of 50% glycerol is recommended if storing aliquots in -20°C for long term use (up to 1 year) Short term (less than 1 week): 4°C. Avoid freeze-thaw cycles.

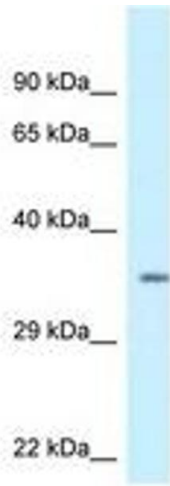


Image 1.