



## Datasheet for ABIN6747474 **anti-OR2M2 antibody (AA 238-287)**



[Go to Product page](#)

### 1 Image

#### Overview

Quantity:	100 µL
Target:	OR2M2
Binding Specificity:	AA 238-287
Reactivity:	Human
Host:	Rabbit
Clonality:	Polyclonal
Conjugate:	This OR2M2 antibody is un-conjugated
Application:	Western Blotting (WB)

#### Product Details

Immunogen:	Synthetic peptide located between aa238-287 of human OR2M2 (Q96R28, NP_001004688). Percent identity by BLAST analysis: Human (100%), Elephant, Panda, Horse (92%), Dog, Bovine, Pig (85%).  Type of Immunogen: Synthetic peptide
Specificity:	Human OR2M2
Predicted Reactivity:	Percent identity by BLAST analysis: Human (100%).
Purification:	Immunoaffinity purified

#### Target Details

Target:	OR2M2
---------	-------

## Target Details

---

Alternative Name:	OR2M2 ( <a href="#">OR2M2 Products</a> )
Background:	Name/Gene ID: OR2M2 Subfamily: Olfactory Family: GPCR  Synonyms: OR2M2, OST423, Olfactory receptor 2M2, OR2M2Q
Gene ID:	391194
NCBI Accession:	<a href="#">NP_001004688</a>

## Application Details

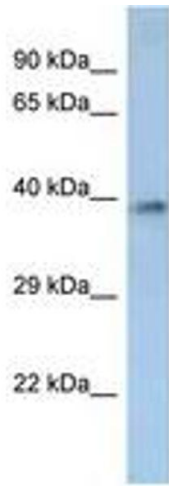
---

Application Notes:	Optimal working dilution should be determined by the investigator.
Comment:	Target Species of Antibody: Human
Restrictions:	For Research Use only

## Handling

---

Format:	Lyophilized
Reconstitution:	Distilled water
Concentration:	Lot specific
Buffer:	Lyophilized from PBS with 2 % sucrose
Handling Advice:	Avoid repeat freeze-thaw cycles.
Storage:	4 °C,-20 °C
Storage Comment:	Long term: -20°C, the use of 50% glycerol is recommended if storing aliquots in -20°C for long term use (up to 1 year) Short term (less than 1 week): 4°C. Avoid freeze-thaw cycles.



**Image 1.**