



[Go to Product page](#)

Datasheet for ABIN6747477

anti-TMEM222 antibody (AA 106-155)

1 Image

Overview

Quantity:	100 µL
Target:	TMEM222
Binding Specificity:	AA 106-155
Reactivity:	Human, Mouse, Horse, Rabbit, Rat, Zebrafish (Danio rerio), Cow, Dog, Guinea Pig, Bat, Chicken, Monkey, Pig
Host:	Rabbit
Clonality:	Polyclonal
Conjugate:	This TMEM222 antibody is un-conjugated
Application:	Western Blotting (WB)

Product Details

Immunogen:	Synthetic peptide located between aa106-155 of human TMEM222 (Q9H0R3, NP_115501). Percent identity by BLAST analysis: Human, Chimpanzee, Gorilla, Monkey, Galago, Marmoset, Mouse, Rat, Elephant, Dog, Bovine, Bat, Rabbit, Horse, Pig, Guinea pig, Turkey, Zebra finch, Chicken (100%), Xenopus (92%), Opossum, Zebrafish (85%). Type of Immunogen: Synthetic peptide
Specificity:	Human C1orf160 / TMEM222
Predicted Reactivity:	Percent identity by BLAST analysis: Human, Rat, Dog, Bovine, Rabbit, Horse, Chicken (100%) Xenopus (92%) Zebrafish (85%).
Purification:	Immunoaffinity purified

Target Details

Target:	TMEM222
Alternative Name:	TMEM222 (TMEM222 Products)
Background:	Name/Gene ID: TMEM222 Synonyms: TMEM222, C1orf160, DKFZP564D0478, RP11-4K3_A.4, Transmembrane protein 222
Gene ID:	84065
NCBI Accession:	NP_115501
UniProt:	Q9H0R3

Application Details

Application Notes:	Optimal working dilution should be determined by the investigator.
Comment:	Target Species of Antibody: Human
Restrictions:	For Research Use only

Handling

Format:	Lyophilized
Reconstitution:	Distilled water
Concentration:	Lot specific
Buffer:	Lyophilized from PBS with 2 % sucrose
Handling Advice:	Avoid repeat freeze-thaw cycles.
Storage:	4 °C,-20 °C
Storage Comment:	Long term: -20°C, the use of 50% glycerol is recommended if storing aliquots in -20°C for long term use (up to 1 year) Short term (less than 1 week): 4°C. Avoid freeze-thaw cycles.

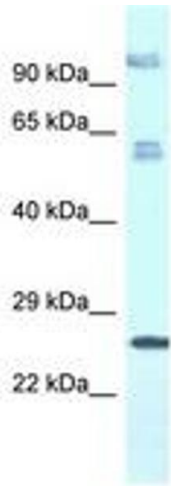


Image 1.