



Datasheet for ABIN6747489
anti-PPP1R2 antibody (AA 27-76)



[Go to Product page](#)

1 Image

Overview

Quantity:	100 µL
Target:	PPP1R2
Binding Specificity:	AA 27-76
Reactivity:	Human, Mouse, Cow, Dog, Guinea Pig, Horse, Rabbit, Monkey
Host:	Rabbit
Clonality:	Polyclonal
Conjugate:	This PPP1R2 antibody is un-conjugated
Application:	Western Blotting (WB)

Product Details

Immunogen:	Synthetic peptide located between aa27-76 of human PPP1R2 (P41236, NP_006232). Percent identity by BLAST analysis: Human, Chimpanzee, Gorilla, Gibbon, Monkey, Galago, Marmoset, Mouse, Elephant, Panda, Dog, Bovine, Rabbit, Horse, Guinea pig, Zebra finch, Platypus (100%), Rat (92%), Pig (90%), Xenopus (84%). Type of Immunogen: Synthetic peptide
Specificity:	Human PPP1R2
Predicted Reactivity:	Percent identity by BLAST analysis: Human, Mouse, Dog, Bovine (100%) Pig (90%) Xenopus (84%).
Purification:	Immunoaffinity purified

Target Details

Target:	PPP1R2
Alternative Name:	IPP2 / PPP1R2 (PPP1R2 Products)
Background:	Name/Gene ID: PPP1R2 Synonyms: PPP1R2, IPP-2, Phosphoprotein phosphatase, IPP2, Phosphatase inhibitor 2
Gene ID:	5504
NCBI Accession:	NP_006232
UniProt:	P41236
Pathways:	PI3K-Akt Signaling , Cellular Glucan Metabolic Process

Application Details

Application Notes:	Optimal working dilution should be determined by the investigator.
Comment:	Target Species of Antibody: Human
Restrictions:	For Research Use only

Handling

Format:	Lyophilized
Reconstitution:	Distilled water
Concentration:	Lot specific
Buffer:	Lyophilized from PBS with 2 % sucrose
Handling Advice:	Avoid repeat freeze-thaw cycles.
Storage:	4 °C,-20 °C
Storage Comment:	Long term: -20°C, the use of 50% glycerol is recommended if storing aliquots in -20°C for long term use (up to 1 year) Short term (less than 1 week): 4°C. Avoid freeze-thaw cycles.

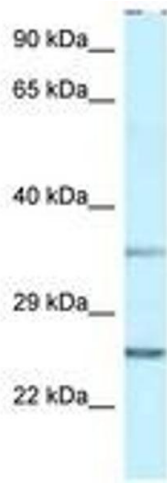


Image 1.