

Datasheet for ABIN6747490
anti-SHP1 antibody (AA 245-294)



[Go to Product page](#)

1 Image

Overview

Quantity:	100 µL
Target:	SHP1 (PTPN6)
Binding Specificity:	AA 245-294
Reactivity:	Human, Monkey
Host:	Rabbit
Clonality:	Polyclonal
Conjugate:	This SHP1 antibody is un-conjugated
Application:	Western Blotting (WB)

Product Details

Immunogen:	Synthetic peptide located between aa245-294 of human PTPN6 (P29350, NP_002822). Percent identity by BLAST analysis: Human, Chimpanzee, Gorilla, Gibbon, Monkey, Galago, Marmoset, Platypus (100%), Mouse, Rat, Elephant, Dog, Bovine, Bat, Rabbit, Horse, Pig, Opossum, Guinea pig, Turkey, Zebra finch, Chicken, Xenopus, Stickleback, Zebrafish (92%), Salmon (85%). Type of Immunogen: Synthetic peptide
Specificity:	Human PTPN6
Predicted Reactivity:	Percent identity by BLAST analysis: Human (100%) Mouse, Rat, Dog, Bovine, Rabbit, Horse, Pig, Guinea pig, Chicken, Xenopus (92%) Zebrafish (85%).
Purification:	Immunoaffinity purified

Target Details

Target:	SHP1 (PTPN6)
Alternative Name:	PTPN6 / SHP-1 (PTPN6 Products)
Background:	Name/Gene ID: PTPN6 Subfamily: NT2 Family: Protein Phosphatase Synonyms: PTPN6, HCP, HPTP1C, Hematopoietic cell phosphatase, PTP-1C, SH-PTP1, SHP-1L, SHP-1, Shptp1, HCPH, PTP1C, SHP1
Gene ID:	5777
NCBI Accession:	NP_002822
UniProt:	P29350
Pathways:	JAK-STAT Signaling , TCR Signaling , TLR Signaling , Nuclear Receptor Transcription Pathway , Positive Regulation of Peptide Hormone Secretion , Steroid Hormone Mediated Signaling Pathway , Response to Growth Hormone Stimulus , Regulation of Leukocyte Mediated Immunity , CXCR4-mediated Signaling Events , Signaling Events mediated by VEGFR1 and VEGFR2 , BCR Signaling

Application Details

Application Notes:	Optimal working dilution should be determined by the investigator.
Comment:	Target Species of Antibody: Human
Restrictions:	For Research Use only

Handling

Format:	Lyophilized
Reconstitution:	Distilled water
Concentration:	Lot specific
Buffer:	Lyophilized from PBS with 2 % sucrose
Handling Advice:	Avoid repeat freeze-thaw cycles.
Storage:	4 °C,-20 °C
Storage Comment:	Long term: -20°C, the use of 50% glycerol is recommended if storing aliquots in -20°C for long

Handling

term use (up to 1 year)

Short term (less than 1 week): 4°C. Avoid freeze-thaw cycles.

Images

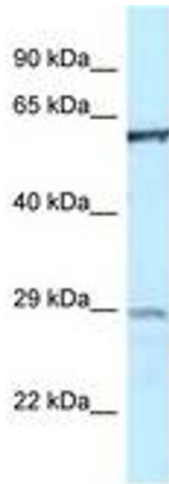


Image 1.