

Datasheet for ABIN6747527
anti-MAP2K5 antibody (AA 142-191)



[Go to Product page](#)

1 Image

Overview

Quantity:	100 µL
Target:	MAP2K5
Binding Specificity:	AA 142-191
Reactivity:	Human, Mouse, Rat, Dog, Cow, Rabbit, Horse, Pig, Monkey, Bat
Host:	Rabbit
Clonality:	Polyclonal
Conjugate:	This MAP2K5 antibody is un-conjugated
Application:	Western Blotting (WB)

Product Details

Immunogen:	Synthetic peptide located between aa142-191 of mouse Map2k5 (Q9WVS7, NP_035970). Percent identity by BLAST analysis: Human, Gorilla, Gibbon, Monkey, Galago, Marmoset, Mouse, Rat, Elephant, Panda, Dog, Bovine, Bat, Rabbit, Horse, Pig, Opossum (100%), Guinea pig, Turkey, Zebra finch, Chicken (92%). Type of Immunogen: Synthetic peptide
Specificity:	Mouse MAP2K5 / MEK5
Predicted Reactivity:	Percent identity by BLAST analysis: Human, Mouse, Rat, Dog, Bovine, Rabbit, Horse, Pig (100%) Chicken (92%).
Purification:	Immunoaffinity purified

Target Details

Target:	MAP2K5
Alternative Name:	MAP2K5 / MEK5 (MAP2K5 Products)
Background:	Name/Gene ID: MAP2K5 Subfamily: MAP2K Family: Protein Kinase Synonyms: MAP2K5, HsT17454, MAPKK 5, MEK 5, MAPKK5, MEK5, MKK5, MAP kinase kinase 5, PRKMK5, MAP kinase kinase MEK5b, MAPK/ERK kinase 5
Gene ID:	5607
NCBI Accession:	NP_035970
UniProt:	Q13163
Pathways:	MAPK Signaling , Neurotrophin Signaling Pathway

Application Details

Application Notes:	Optimal working dilution should be determined by the investigator.
Comment:	Target Species of Antibody: Mouse
Restrictions:	For Research Use only

Handling

Format:	Lyophilized
Reconstitution:	Distilled water
Concentration:	Lot specific
Buffer:	Lyophilized from PBS with 2 % sucrose
Handling Advice:	Avoid repeat freeze-thaw cycles.
Storage:	4 °C,-20 °C
Storage Comment:	Long term: -20°C, the use of 50% glycerol is recommended if storing aliquots in -20°C for long term use (up to 1 year) Short term (less than 1 week): 4°C. Avoid freeze-thaw cycles.

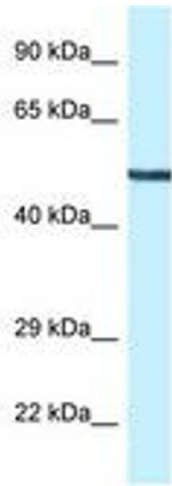


Image 1.