



[Go to Product page](#)

Datasheet for ABIN6747534
anti-WWOX antibody (AA 95-144)

1 Image

Overview

Quantity:	100 µL
Target:	WWOX
Binding Specificity:	AA 95-144
Reactivity:	Human, Mouse, Rat, Cow, Guinea Pig, Horse
Host:	Rabbit
Clonality:	Polyclonal
Conjugate:	This WWOX antibody is un-conjugated
Application:	Western Blotting (WB)

Product Details

Immunogen:	Synthetic peptide located between aa95-144 of human WWOX (Q9NZC7-3, NP_570607). Percent identity by BLAST analysis: Human, Chimpanzee, Orangutan, Mouse, Rat, Elephant, Bovine (100%), Gibbon, Galago, Panda, Dog, Bat, Rabbit (92%), Monkey, Horse, Guinea pig (85%), Opossum (84%). Type of Immunogen: Synthetic peptide
Specificity:	Human WWOX
Predicted Reactivity:	Percent identity by BLAST analysis: Human, Mouse, Rat, Bovine (100%) Dog, Rabbit (92%) Horse, Guinea pig (85%).
Purification:	Immunoaffinity purified

Target Details

Target:	WVOX
Alternative Name:	WVOX (WVOX Products)
Background:	Name/Gene ID: WVOX Synonyms: WVOX, D16S432E, FRA16D, FOR, HHCMA56, PRO0128, SDR41C1, WOX1
Gene ID:	51741
NCBI Accession:	NP_570607
UniProt:	Q9NZC7

Application Details

Application Notes:	Optimal working dilution should be determined by the investigator.
Comment:	Target Species of Antibody: Human
Restrictions:	For Research Use only

Handling

Format:	Lyophilized
Reconstitution:	Distilled water
Concentration:	Lot specific
Buffer:	Lyophilized from PBS with 2 % sucrose
Handling Advice:	Avoid repeat freeze-thaw cycles.
Storage:	4 °C, -20 °C
Storage Comment:	Long term: -20°C, the use of 50% glycerol is recommended if storing aliquots in -20°C for long term use (up to 1 year) Short term (less than 1 week): 4°C. Avoid freeze-thaw cycles.

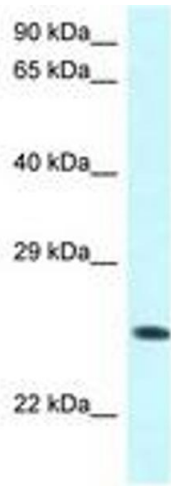


Image 1.