



[Go to Product page](#)

Datasheet for ABIN6747544

anti-ARFGAP3 antibody (AA 91-140)

1 Image

Overview

| | |
|----------------------|--|
| Quantity: | 100 µL |
| Target: | ARFGAP3 |
| Binding Specificity: | AA 91-140 |
| Reactivity: | Human, Guinea Pig, Horse, Xenopus laevis |
| Host: | Rabbit |
| Clonality: | Polyclonal |
| Conjugate: | This ARFGAP3 antibody is un-conjugated |
| Application: | Western Blotting (WB) |

Product Details

| | |
|-----------------------|--|
| Immunogen: | Synthetic peptide located between aa91-140 of human ARFGAP3 (Q9NP61, NP_055385). Percent identity by BLAST analysis: Human, Chimpanzee, Gorilla, Orangutan, Gibbon, Xenopus, Stickleback (100%), Monkey, Galago, Marmoset, Elephant, Dog, Bovine, Pig, Opossum, Turkey, Zebra finch, Chicken, Zebrafish (92%), Mouse, Rat, Horse, Guinea pig (85%), Lizard (84%). Type of Immunogen: Synthetic peptide |
| Specificity: | Human ARFGAP3 |
| Predicted Reactivity: | Percent identity by BLAST analysis: Human, Xenopus (100%) Dog, Chicken (92%) Horse, Guinea pig (85%). |
| Purification: | Immunoaffinity purified |

Target Details

| | |
|-------------------|---|
| Target: | ARFGAP3 |
| Alternative Name: | ARFGAP3 (ARFGAP3 Products) |
| Background: | Name/Gene ID: ARFGAP3 Synonyms: ARFGAP3, ARF GAP 3 |
| Gene ID: | 26286 |
| NCBI Accession: | NP_055385 |
| UniProt: | Q9NP61 |

Application Details

| | |
|--------------------|--|
| Application Notes: | Optimal working dilution should be determined by the investigator. |
| Comment: | Target Species of Antibody: Human |
| Restrictions: | For Research Use only |

Handling

| | |
|------------------|---|
| Format: | Lyophilized |
| Reconstitution: | Distilled water |
| Concentration: | Lot specific |
| Buffer: | Lyophilized from PBS with 2 % sucrose |
| Handling Advice: | Avoid repeat freeze-thaw cycles. |
| Storage: | 4 °C, -20 °C |
| Storage Comment: | Long term: -20°C, the use of 50% glycerol is recommended if storing aliquots in -20°C for long term use (up to 1 year) Short term (less than 1 week): 4°C. Avoid freeze-thaw cycles. |

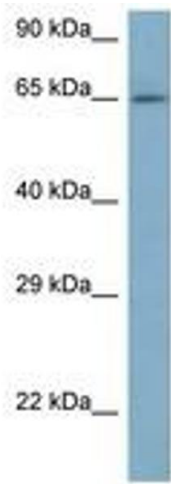


Image 1.