

Datasheet for ABIN6747545  
**anti-Ataxin 10 antibody (N-Term)**



[Go to Product page](#)

1 Image

## Overview

Quantity:	100 µL
Target:	Ataxin 10 (ATXN10)
Binding Specificity:	N-Term
Reactivity:	Human, Mouse, Rat, Guinea Pig, Monkey
Host:	Rabbit
Clonality:	Polyclonal
Conjugate:	This Ataxin 10 antibody is un-conjugated
Application:	Western Blotting (WB)

## Product Details

Immunogen:	Synthetic peptide from N-Terminus of human ATXN10 (Q9UBB4, NP_037368). Percent identity by BLAST analysis: Human, Chimpanzee, Gorilla, Orangutan, Gibbon, Monkey, Galago, Marmoset, Mouse, Rat, Guinea pig (100%), Bovine (92%).  Type of Immunogen: Synthetic peptide
Specificity:	Human ATXN10 / Ataxin-10
Predicted Reactivity:	Percent identity by BLAST analysis: Human, Mouse, Guinea pig (100%).
Purification:	Immunoaffinity purified

## Target Details

Target:	Ataxin 10 (ATXN10)
---------	--------------------

## Target Details

---

Alternative Name: [ATXN10 / SCA10 \(ATXN10 Products\)](#)

Background: Name/Gene ID: ATXN10

Synonyms: ATXN10, Ataxin 10, Brain protein E46 homolog, E46L, HUMEEP, SCA10, Spinocerebellar ataxia 10, Ataxin-10

Gene ID: 25814

NCBI Accession: [NP\\_037368](#)

UniProt: [Q9UBB4](#)

## Application Details

---

Application Notes: Optimal working dilution should be determined by the investigator.

Comment: Target Species of Antibody: Human

Restrictions: For Research Use only

## Handling

---

Format: Lyophilized

Reconstitution: Distilled water

Concentration: Lot specific

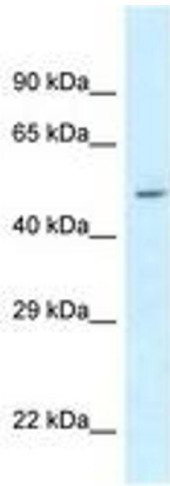
Buffer: Lyophilized from PBS with 2 % sucrose

Handling Advice: Avoid repeat freeze-thaw cycles.

Storage: 4 °C, -20 °C

Storage Comment: Long term: -20°C, the use of 50% glycerol is recommended if storing aliquots in -20°C for long term use (up to 1 year)

Short term (less than 1 week): 4°C. Avoid freeze-thaw cycles.



**Image 1.**