



[Go to Product page](#)

Datasheet for ABIN6747552
anti-EIF3F antibody (AA 97-146)

1 Image

Overview

Quantity:	100 µL
Target:	EIF3F
Binding Specificity:	AA 97-146
Reactivity:	Human, Mouse, Rat, Cow, Monkey, Rabbit, Horse, Guinea Pig, Bat
Host:	Rabbit
Clonality:	Polyclonal
Conjugate:	This EIF3F antibody is un-conjugated
Application:	Western Blotting (WB)

Product Details

Immunogen:	Synthetic peptide located between aa97-146 of human EIF3F (O00303, NP_003745). Percent identity by BLAST analysis: Human, Chimpanzee, Gorilla, Gibbon, Monkey, Marmoset, Mouse, Rat, Elephant, Bovine, Bat, Rabbit, Horse, Guinea pig (100%), Opossum, Chicken, Xenopus, Zebrafish (92%), Stickleback, Pufferfish (85%). Type of Immunogen: Synthetic peptide
Specificity:	Human EIF3F
Predicted Reactivity:	Percent identity by BLAST analysis: Human, Mouse, Rat, Bovine, Rabbit, Guinea pig (100%) Chicken (92%).
Purification:	Immunoaffinity purified

Target Details

Target:	EIF3F
Alternative Name:	EIF3S5 / EIF3F (EIF3F Products)
Background:	Name/Gene ID: EIF3F Synonyms: EIF3F, Deubiquitinating enzyme eIF3f, EIF-3-epsilon, EIF3 p47, EIF3S5, EIF3-epsilon, EIF3-p47
Gene ID:	8665
NCBI Accession:	NP_003745
UniProt:	O00303
Pathways:	Ribonucleoprotein Complex Subunit Organization

Application Details

Application Notes:	Optimal working dilution should be determined by the investigator.
Comment:	Target Species of Antibody: Human
Restrictions:	For Research Use only

Handling

Format:	Lyophilized
Reconstitution:	Distilled water
Concentration:	Lot specific
Buffer:	Lyophilized from PBS with 2 % sucrose
Handling Advice:	Avoid repeat freeze-thaw cycles.
Storage:	4 °C,-20 °C
Storage Comment:	Long term: -20°C, the use of 50% glycerol is recommended if storing aliquots in -20°C for long term use (up to 1 year) Short term (less than 1 week): 4°C. Avoid freeze-thaw cycles.

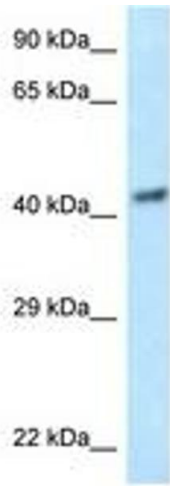


Image 1.