

Datasheet for ABIN6747564
anti-P2RX2 antibody (AA 90-139)[Go to Product page](#)

1 Image

Overview

Quantity:	100 µL
Target:	P2RX2
Binding Specificity:	AA 90-139
Reactivity:	Human, Mouse, Rat, Rabbit, Horse, Dog, Guinea Pig, Cow, Monkey, Pig, Xenopus laevis
Host:	Rabbit
Clonality:	Polyclonal
Conjugate:	This P2RX2 antibody is un-conjugated
Application:	Western Blotting (WB)

Product Details

Immunogen:	Synthetic peptide located between aa90-139 of mouse P2rx2 (Q812E7, NP_001158306). Percent identity by BLAST analysis: Human, Gorilla, Gibbon, Monkey, Mouse, Rat, Panda, Dog, Bovine, Rabbit, Horse, Pig, Opossum, Guinea pig, Xenopus (100%), Galago (92%). Type of Immunogen: Synthetic peptide
Specificity:	Mouse P2RX2 / P2X2
Predicted Reactivity:	Percent identity by BLAST analysis: Human, Mouse, Rat, Dog, Bovine, Rabbit, Horse, Pig, Guinea pig (100%).
Purification:	Immunoaffinity purified

Target Details

Target:	P2RX2
Alternative Name:	P2RX2 / P2X2 (P2RX2 Products)
Background:	Name/Gene ID: P2RX2 Subfamily: P2X receptor Family: Ion Channel Synonyms: P2RX2, ATP receptor, p2X2, p2X Receptor, subunit 2, Purinergic receptor, p2RX2, p2X receptor 2, p2X purinoceptor 2, p2X2 purinoceptor
Gene ID:	22953
NCBI Accession:	NP_001158306
UniProt:	Q9UBL9
Pathways:	Skeletal Muscle Fiber Development , Positive Regulation of Endopeptidase Activity

Application Details

Application Notes:	Optimal working dilution should be determined by the investigator.
Comment:	Target Species of Antibody: Mouse
Restrictions:	For Research Use only

Handling

Format:	Lyophilized
Reconstitution:	Distilled water
Concentration:	Lot specific
Buffer:	Lyophilized from PBS with 2 % sucrose
Handling Advice:	Avoid repeat freeze-thaw cycles.
Storage:	4 °C,-20 °C
Storage Comment:	Long term: -20°C, the use of 50% glycerol is recommended if storing aliquots in -20°C for long term use (up to 1 year) Short term (less than 1 week): 4°C. Avoid freeze-thaw cycles.

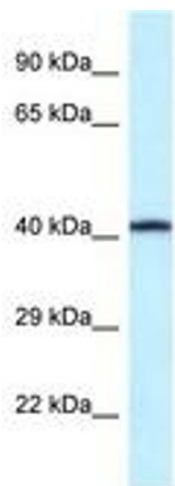


Image 1.