



[Go to Product page](#)

Datasheet for ABIN6747569

anti-Zfp472 antibody (AA 20-69)

1 Image

Overview

Quantity:	100 µL
Target:	Zfp472 (ZFP472)
Binding Specificity:	AA 20-69
Reactivity:	Human, Mouse, Cow, Horse, Pig, Rat, Bat
Host:	Rabbit
Clonality:	Polyclonal
Conjugate:	This Zfp472 antibody is un-conjugated
Application:	Western Blotting (WB)

Product Details

Immunogen:	Synthetic peptide located between aa20-69 of mouse Zfp472 (E9Q2M4, NP_694703). Percent identity by BLAST analysis: Human, Gibbon, Monkey, Mouse, Bovine, Bat, Horse, Pig (100%), Gorilla, Orangutan, Galago, Marmoset, Panda (92%), Rat, Dog (85%). Type of Immunogen: Synthetic peptide
Specificity:	Mouse Zfp472
Predicted Reactivity:	Percent identity by BLAST analysis: Mouse, Rat (85%).
Purification:	Immunoaffinity purified

Target Details

Target:	Zfp472 (ZFP472)
---------	-----------------

Target Details

Alternative Name: Zfp472 ([ZFP472 Products](#))

Background: Name/Gene ID: Zfp472

Synonyms: Zfp472, Krim-1B, Krim1, Zinc finger protein 472, KRIM-1, Krim-1A

Gene ID: 224691

NCBI Accession: [NP_694703](#)

Application Details

Application Notes: Optimal working dilution should be determined by the investigator.

Comment: Target Species of Antibody: Mouse

Restrictions: For Research Use only

Handling

Format: Lyophilized

Reconstitution: Distilled water

Concentration: Lot specific

Buffer: Lyophilized from PBS with 2 % sucrose

Handling Advice: Avoid repeat freeze-thaw cycles.

Storage: 4 °C, -20 °C

Storage Comment: Long term: -20°C, the use of 50% glycerol is recommended if storing aliquots in -20°C for long term use (up to 1 year)

Short term (less than 1 week): 4°C. Avoid freeze-thaw cycles.

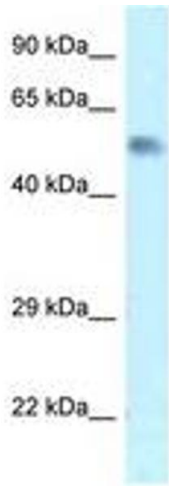


Image 1.