



[Go to Product page](#)

Datasheet for ABIN6747577
anti-TAT antibody (AA 361-410)

1 Image

Overview

Quantity:	100 µL
Target:	TAT
Binding Specificity:	AA 361-410
Reactivity:	Human, Mouse, Rat, Monkey, Bat, Chicken, Cow, Horse
Host:	Rabbit
Clonality:	Polyclonal
Conjugate:	This TAT antibody is un-conjugated
Application:	Western Blotting (WB)

Product Details

Immunogen:	Synthetic peptide located between aa361-410 of rat Tat (P04694, NP_036800). Percent identity by BLAST analysis: Human, Gorilla, Gibbon, Monkey, Galago, Marmoset, Mouse, Rat, Panda, Bovine, Bat, Horse, Turkey, Zebra finch, Chicken, Platypus (100%), Elephant, Rabbit, Pig, Guinea pig, Zebrafish (92%), Xenopus (85%). Type of Immunogen: Synthetic peptide
Specificity:	Rat TAT / Tyrosine Aminotransferase
Predicted Reactivity:	Percent identity by BLAST analysis: Human, Mouse, Rat, Bovine, Horse, Chicken (100%) Rabbit, Pig, Zebrafish (92%).
Purification:	Immunoaffinity purified

Target Details

Target:	TAT
Alternative Name:	Tyrosine Aminotransferase (TAT Products)
Background:	Name/Gene ID: TAT Synonyms: TAT, Tyrosine aminotransferase
Gene ID:	6898
NCBI Accession:	NP_036800
UniProt:	P17735
Pathways:	Response to Water Deprivation

Application Details

Application Notes:	Optimal working dilution should be determined by the investigator.
Comment:	Target Species of Antibody: Rat
Restrictions:	For Research Use only

Handling

Format:	Lyophilized
Reconstitution:	Distilled water
Concentration:	Lot specific
Buffer:	Lyophilized from PBS with 2 % sucrose
Handling Advice:	Avoid repeat freeze-thaw cycles.
Storage:	4 °C,-20 °C
Storage Comment:	Long term: -20°C, the use of 50% glycerol is recommended if storing aliquots in -20°C for long term use (up to 1 year) Short term (less than 1 week): 4°C. Avoid freeze-thaw cycles.

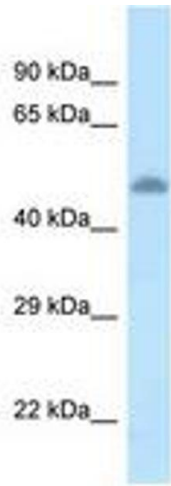


Image 1.