

Datasheet for ABIN6747600  
**anti-CAMK2D antibody (AA 302-351)**



[Go to Product page](#)

1 Image

## Overview

Quantity:	100 µL
Target:	CAMK2D
Binding Specificity:	AA 302-351
Reactivity:	Human, Mouse, Rat, Zebrafish (Danio rerio), Cow, Monkey, Rabbit, Dog, Guinea Pig, Horse, Pig, Xenopus laevis, Chicken
Host:	Rabbit
Clonality:	Polyclonal
Conjugate:	This CAMK2D antibody is un-conjugated
Application:	Western Blotting (WB)

## Product Details

Immunogen:	Synthetic peptide located between aa302-351 of human CAMK2D (A8MVS8, NP_742113). Percent identity by BLAST analysis: Human, Chimpanzee, Gorilla, Gibbon, Monkey, Marmoset, Mouse, Rat, Elephant, Dog, Bovine, Rabbit, Horse, Pig, Guinea pig, Turkey, Chicken, Xenopus (100%), Galago, Bat, Opossum, Zebra finch, Platypus (92%), Zebrafish (85%).  Type of Immunogen: Synthetic peptide
Specificity:	Human CAMK2D
Predicted Reactivity:	Percent identity by BLAST analysis: Human, Mouse, Rat, Dog, Bovine, Horse, Guinea pig, Chicken, Xenopus (100%) Zebrafish (85%).
Purification:	Immunoaffinity purified

## Target Details

---

Target:	CAMK2D
Alternative Name:	CAMK2D / CaMKII delta ( <a href="#">CAMK2D Products</a> )
Background:	Name/Gene ID: CAMK2D Subfamily: CAMK2 Family: Protein Kinase  Synonyms: CAMK2D, CaM kinase II delta, CaM kinase II delta subunit, CaM kinase II subunit delta, CaM-kinase II delta chain, CaMK-II delta subunit, CaMKIIdelta, CaMK II delta, CAMKD, CaMK-II subunit delta, CaMKII delta, Delta CaMK-II
Gene ID:	817
NCBI Accession:	<a href="#">NP_742113</a>
UniProt:	<a href="#">Q13557</a>
Pathways:	<a href="#">WNT Signaling</a> , <a href="#">Interferon-gamma Pathway</a> , <a href="#">Myometrial Relaxation and Contraction</a> , <a href="#">Smooth Muscle Cell Migration</a>

## Application Details

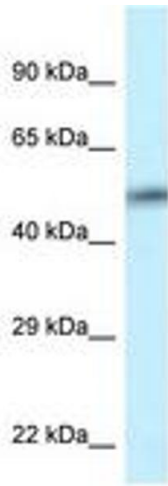
---

Application Notes:	Optimal working dilution should be determined by the investigator.
Comment:	Target Species of Antibody: Human
Restrictions:	For Research Use only

## Handling

---

Format:	Lyophilized
Reconstitution:	Distilled water
Concentration:	Lot specific
Buffer:	Lyophilized from PBS with 2 % sucrose
Handling Advice:	Avoid repeat freeze-thaw cycles.
Storage:	4 °C, -20 °C
Storage Comment:	Long term: -20°C, the use of 50% glycerol is recommended if storing aliquots in -20°C for long term use (up to 1 year) Short term (less than 1 week): 4°C. Avoid freeze-thaw cycles.



**Image 1.**