



[Go to Product page](#)

Datasheet for ABIN6747616
anti-GNMT antibody (C-Term)

1 Image

Overview

| | |
|----------------------|---------------------------------------|
| Quantity: | 100 µL |
| Target: | GNMT |
| Binding Specificity: | C-Term |
| Reactivity: | Human, Mouse, Horse, Dog, Pig, Monkey |
| Host: | Rabbit |
| Clonality: | Polyclonal |
| Conjugate: | This GNMT antibody is un-conjugated |
| Application: | Western Blotting (WB) |

Product Details

| | |
|-----------------------|--|
| Immunogen: | Synthetic peptide from C-Terminus of mouse Gnmt (Q9QXF8, NP_034451). Percent identity by BLAST analysis: Human, Gorilla, Gibbon, Monkey, Marmoset, Mouse, Panda, Dog, Horse, Pig (100%), Galago, Rat, Elephant, Bat, Rabbit, Opossum, Platypus (92%), Chicken, Lizard (85%). Type of Immunogen: Synthetic peptide |
| Specificity: | Mouse GNMT |
| Predicted Reactivity: | Percent identity by BLAST analysis: Human, Mouse, Dog, Horse, Pig (100%) Rat, Rabbit (92%) Chicken (85%). |
| Purification: | Immunoaffinity purified |

Target Details

| | |
|-------------------|---|
| Target: | GNMT |
| Alternative Name: | GNMT (GNMT Products) |
| Background: | Name/Gene ID: GNMT Synonyms: GNMT |
| Gene ID: | 27232 |
| NCBI Accession: | NP_034451 |
| UniProt: | Q14749 |
| Pathways: | Cellular Glucan Metabolic Process, Regulation of Carbohydrate Metabolic Process |

Application Details

| | |
|--------------------|--|
| Application Notes: | Optimal working dilution should be determined by the investigator. |
| Comment: | Target Species of Antibody: Mouse |
| Restrictions: | For Research Use only |

Handling

| | |
|------------------|---|
| Format: | Lyophilized |
| Reconstitution: | Distilled water |
| Concentration: | Lot specific |
| Buffer: | Lyophilized from PBS with 2 % sucrose |
| Handling Advice: | Avoid repeat freeze-thaw cycles. |
| Storage: | 4 °C,-20 °C |
| Storage Comment: | Long term: -20°C, the use of 50% glycerol is recommended if storing aliquots in -20°C for long term use (up to 1 year) Short term (less than 1 week): 4°C. Avoid freeze-thaw cycles. |

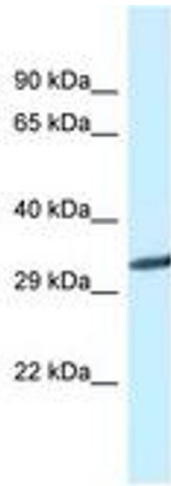


Image 1.