



[Go to Product page](#)

Datasheet for ABIN6747618
anti-CHN1 antibody (AA 229-278)

1 Image

Overview

Quantity:	100 µL
Target:	CHN1 (ARHGAP2)
Binding Specificity:	AA 229-278
Reactivity:	Human, Mouse, Rat, Dog, Horse, Zebrafish (Danio rerio), Cow, Rabbit, Monkey, Bat
Host:	Rabbit
Clonality:	Polyclonal
Conjugate:	This CHN1 antibody is un-conjugated
Application:	Western Blotting (WB)

Product Details

Immunogen:	Synthetic peptide located between aa229-278 of human CHN1 (P15882-2, NP_001193531). Percent identity by BLAST analysis: Human, Chimpanzee, Gorilla, Gibbon, Monkey, Mouse, Rat, Elephant, Dog, Cat, Bovine, Bat, Rabbit, Horse, Opossum, Platypus (100%), Galago, Guinea pig, Turkey, Chicken (92%), Xenopus, Zebrafish (85%). Type of Immunogen: Synthetic peptide
Specificity:	Human CHN1
Predicted Reactivity:	Percent identity by BLAST analysis: Human, Mouse, Dog, Bovine, Rabbit, Horse (100%) Guinea pig, Chicken (92%) Xenopus, Zebrafish (85%).
Purification:	Immunoaffinity purified

Target Details

Target:	CHN1 (ARHGAP2)
Alternative Name:	CHN1 (ARHGAP2 Products)
Background:	Name/Gene ID: CHN1 Synonyms: CHN1, A-chimaerin, Alpha-chimerin, Chimerin 1, Chimerin (chimaerin) 1, CHN, DURS2, Duane retraction syndrome 2, N-chimaerin, N-chimerin, NC, RhoGAP2, ARHGAP2
Gene ID:	1123
NCBI Accession:	NP_001193531
UniProt:	P15882

Application Details

Application Notes:	Optimal working dilution should be determined by the investigator.
Comment:	Target Species of Antibody: Human
Restrictions:	For Research Use only

Handling

Format:	Lyophilized
Reconstitution:	Distilled water
Concentration:	Lot specific
Buffer:	Lyophilized from PBS with 2 % sucrose
Handling Advice:	Avoid repeat freeze-thaw cycles.
Storage:	4 °C, -20 °C
Storage Comment:	Long term: -20°C, the use of 50% glycerol is recommended if storing aliquots in -20°C for long term use (up to 1 year) Short term (less than 1 week): 4°C. Avoid freeze-thaw cycles.

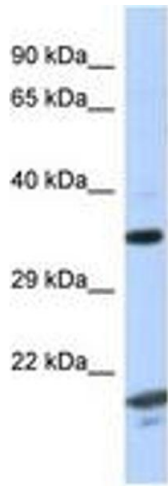


Image 1.