



[Go to Product page](#)

Datasheet for ABIN6747629  
**anti-VPS4B antibody (AA 70-119)**

1 Image

Overview

Quantity:	100 µL
Target:	VPS4B (vps4b)
Binding Specificity:	AA 70-119
Reactivity:	Human, Rabbit, Dog, Guinea Pig, Horse, Bat, Monkey, Pig
Host:	Rabbit
Clonality:	Polyclonal
Conjugate:	This VPS4B antibody is un-conjugated
Application:	Western Blotting (WB)

Product Details

Immunogen:	Synthetic peptide located between aa70-119 of human VPS4B (O75351, NP_004860). Percent identity by BLAST analysis: Human, Chimpanzee, Gorilla, Orangutan, Gibbon, Monkey, Galago, Marmoset, Dog, Bat, Horse, Pig, Guinea pig (100%), Bovine, Opossum (92%), Elephant, Rabbit (85%).  Type of Immunogen: Synthetic peptide
Specificity:	Human VPS4B
Predicted Reactivity:	Percent identity by BLAST analysis: Human, Dog, Pig, Guinea pig (100%) Bovine (92%) Rabbit (85%).
Purification:	Immunoaffinity purified

## Target Details

---

Target:	VPS4B (vps4b)
Alternative Name:	SKD1 / VPS4B ( <a href="#">vps4b Products</a> )
Background:	Name/Gene ID: VPS4B  Synonyms: VPS4B, Cell migration-inducing 1, Protein SKD1, SKD1, SKD1B, MIG1, VPS42, Vacuolar protein sorting 4B, VPS4-2
Gene ID:	9525
NCBI Accession:	<a href="#">NP_004860</a>
UniProt:	<a href="#">O75351</a>
Pathways:	<a href="#">Microtubule Dynamics</a> , <a href="#">CXCR4-mediated Signaling Events</a>

## Application Details

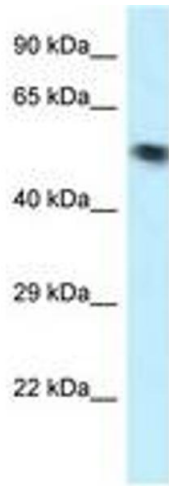
---

Application Notes:	Optimal working dilution should be determined by the investigator.
Comment:	Target Species of Antibody: Human
Restrictions:	For Research Use only

## Handling

---

Format:	Lyophilized
Reconstitution:	Distilled water
Concentration:	Lot specific
Buffer:	Lyophilized from PBS with 2 % sucrose
Handling Advice:	Avoid repeat freeze-thaw cycles.
Storage:	4 °C,-20 °C
Storage Comment:	Long term: -20°C, the use of 50% glycerol is recommended if storing aliquots in -20°C for long term use (up to 1 year)  Short term (less than 1 week): 4°C. Avoid freeze-thaw cycles.



**Image 1.**