

Datasheet for ABIN6747634
anti-MMACHC antibody (AA 190-239)



[Go to Product page](#)

1 Image

Overview

Quantity:	100 µL
Target:	MMACHC
Binding Specificity:	AA 190-239
Reactivity:	Human, Mouse, Rat, Cow, Dog, Guinea Pig, Horse, Rabbit, Bat, Monkey, Pig
Host:	Rabbit
Clonality:	Polyclonal
Conjugate:	This MMACHC antibody is un-conjugated
Application:	Western Blotting (WB)

Product Details

Immunogen:	Synthetic peptide located between aa190-239 of human MMACHC (Q9Y4U1, NP_056321). Percent identity by BLAST analysis: Human, Gorilla, Gibbon, Monkey, Marmoset, Elephant, Panda, Dog, Bovine, Bat, Rabbit, Horse, Pig, Guinea pig, Zebra finch (100%), Turkey, Chicken (91%), Mouse, Rat, Hamster, Opossum (85%), Lizard (81%). Type of Immunogen: Synthetic peptide
Specificity:	Human MMACHC
Predicted Reactivity:	Percent identity by BLAST analysis: Dog, Bovine, Horse, Pig (100%) Chicken (91%) Mouse, Rat (85%).
Purification:	Immunoaffinity purified

Target Details

Target:	MMACHC
Alternative Name:	MMACHC (MMACHC Products)
Background:	Name/Gene ID: MMACHC Synonyms: MMACHC, RP11-291L19.3, DKFZP564I122
Gene ID:	25974
NCBI Accession:	NP_056321
UniProt:	Q9Y4U1

Application Details

Application Notes:	Optimal working dilution should be determined by the investigator.
Comment:	Target Species of Antibody: Human
Restrictions:	For Research Use only

Handling

Format:	Lyophilized
Reconstitution:	Distilled water
Concentration:	Lot specific
Buffer:	Lyophilized from PBS with 2 % sucrose
Handling Advice:	Avoid repeat freeze-thaw cycles.
Storage:	4 °C, -20 °C
Storage Comment:	Long term: -20°C, the use of 50% glycerol is recommended if storing aliquots in -20°C for long term use (up to 1 year) Short term (less than 1 week): 4°C. Avoid freeze-thaw cycles.

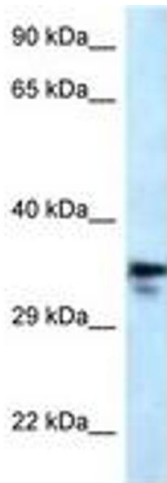


Image 1.