



[Go to Product page](#)

Datasheet for ABIN6747647
anti-RPL39 antibody (C-Term)

1 Image

Overview

Quantity:	100 µL
Target:	RPL39
Binding Specificity:	C-Term
Reactivity:	Mouse, Human, Rat, Cow, Chicken, Guinea Pig, Horse, Rabbit, Zebrafish (Danio rerio), Bat, Monkey, Pig, Xenopus laevis
Host:	Rabbit
Clonality:	Polyclonal
Conjugate:	This RPL39 antibody is un-conjugated
Application:	Western Blotting (WB)

Product Details

Immunogen:	Synthetic peptide from C-Terminus of human RPL39 (P62891, NP_000991). Percent identity by BLAST analysis: Human, Gorilla, Gibbon, Monkey, Marmoset, Mouse, Rat, Elephant, Panda, Bovine, Bat, Rabbit, Horse, Pig, Guinea pig, Zebra finch, Chicken, Xenopus, Trout, Catfish, Salmon, Stickleback, Zebrafish (100%), Galago, Nematode (92%), Sea squirt (85%). Type of Immunogen: Synthetic peptide
Specificity:	Human RPL39
Predicted Reactivity:	Percent identity by BLAST analysis: Mouse, Chicken, Xenopus, Zebrafish (100%) Rabbit (84%).
Purification:	Immunoaffinity purified

Target Details

Target: RPL39

Alternative Name: RPL39 ([RPL39 Products](#))

Background: Name/Gene ID: RPL39

Synonyms: RPL39, 60S ribosomal protein L39, L39, Ribosomal protein L39, RPL39L1

Gene ID: 6170

NCBI Accession: [NP_000991](#)

UniProt: [P62891](#)

Application Details

Application Notes: Optimal working dilution should be determined by the investigator.

Comment: Target Species of Antibody: Human

Restrictions: For Research Use only

Handling

Format: Lyophilized

Reconstitution: Distilled water

Concentration: Lot specific

Buffer: Lyophilized from PBS with 2 % sucrose

Handling Advice: Avoid repeat freeze-thaw cycles.

Storage: 4 °C, -20 °C

Storage Comment: Long term: -20°C, the use of 50% glycerol is recommended if storing aliquots in -20°C for long term use (up to 1 year)

Short term (less than 1 week): 4°C. Avoid freeze-thaw cycles.

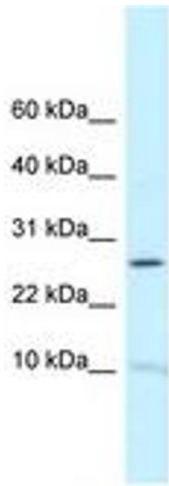


Image 1.