

Datasheet for ABIN6747656
anti-TBC1D2B antibody (AA 570-619)[Go to Product page](#)

1 Image

Overview

Quantity:	100 µL
Target:	TBC1D2B
Binding Specificity:	AA 570-619
Reactivity:	Cow, Dog, Guinea Pig, Horse, Human, Mouse, Rabbit, Rat, Monkey, Pig
Host:	Rabbit
Clonality:	Polyclonal
Conjugate:	This TBC1D2B antibody is un-conjugated
Application:	Western Blotting (WB)

Product Details

Immunogen:	Synthetic peptide located between aa570-619 of human TBC1D2B (Q9UPU7, NP_055894). Percent identity by BLAST analysis: Human, Chimpanzee, Gorilla, Gibbon, Monkey, Galago, Marmoset, Mouse, Rat, Rabbit, Guinea pig (100%), Hamster (92%), Elephant, Dog, Horse, Pig, Platypus (84%). Type of Immunogen: Synthetic peptide
Specificity:	Human TBC1D2B
Predicted Reactivity:	Percent identity by BLAST analysis: Human, Rat, Rabbit, Guinea pig (100%) Dog, Horse, Pig (84%).
Purification:	Immunoaffinity purified

Target Details

Target:	TBC1D2B
Alternative Name:	TBC1D2B (TBC1D2B Products)
Background:	Name/Gene ID: TBC1D2B Synonyms: TBC1D2B, KIAA1055, TBC1 domain family, member 2B, TBC1 domain family member 2B
Gene ID:	23102
NCBI Accession:	NP_055894
UniProt:	Q9UPU7

Application Details

Application Notes:	Optimal working dilution should be determined by the investigator.
Comment:	Target Species of Antibody: Human
Restrictions:	For Research Use only

Handling

Format:	Lyophilized
Reconstitution:	Distilled water
Concentration:	Lot specific
Buffer:	Lyophilized from PBS with 2 % sucrose
Handling Advice:	Avoid repeat freeze-thaw cycles.
Storage:	4 °C, -20 °C
Storage Comment:	Long term: -20°C, the use of 50% glycerol is recommended if storing aliquots in -20°C for long term use (up to 1 year) Short term (less than 1 week): 4°C. Avoid freeze-thaw cycles.

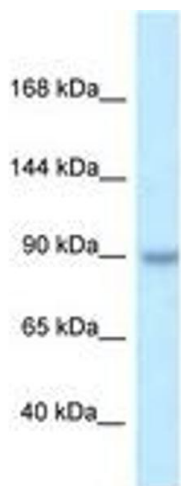


Image 1.