



[Go to Product page](#)

Datasheet for ABIN6747658
anti-Klotho antibody (AA 100-149)

1 Image

Overview

Quantity:	100 µL
Target:	Klotho (KL)
Binding Specificity:	AA 100-149
Reactivity:	Human, Mouse, Pig, Bat
Host:	Rabbit
Clonality:	Polyclonal
Conjugate:	This Klotho antibody is un-conjugated
Application:	Western Blotting (WB)

Product Details

Immunogen:	Synthetic peptide located between aa100-149 of mouse KI (O35082, NP_038851). Percent identity by BLAST analysis: Human, Monkey, Mouse, Elephant, Bat, Pig (100%), Galago, Marmoset, Rat, Bovine, Rabbit, Horse, Xenopus (92%), Turkey, Chicken (91%). Type of Immunogen: Synthetic peptide
Specificity:	Mouse KL / Klotho
Predicted Reactivity:	Percent identity by BLAST analysis: Human, Pig (100%) Mouse, Rat, Bovine, Rabbit (92%) Chicken (91%).
Purification:	Immunoaffinity purified

Target Details

Target:	Klotho (KL)
Alternative Name:	KL / Klotho (KL Products)
Background:	Name/Gene ID: KL Synonyms: KL, Klotho
Gene ID:	9365
NCBI Accession:	NP_038851
UniProt:	Q9UEF7
Pathways:	Fc-epsilon Receptor Signaling Pathway , EGFR Signaling Pathway , Neurotrophin Signaling Pathway , Hormone Activity , Growth Factor Binding

Application Details

Application Notes:	Optimal working dilution should be determined by the investigator.
Comment:	Target Species of Antibody: Mouse
Restrictions:	For Research Use only

Handling

Format:	Lyophilized
Reconstitution:	Distilled water
Concentration:	Lot specific
Buffer:	Lyophilized from PBS with 2 % sucrose
Handling Advice:	Avoid repeat freeze-thaw cycles.
Storage:	4 °C,-20 °C
Storage Comment:	Long term: -20°C, the use of 50% glycerol is recommended if storing aliquots in -20°C for long term use (up to 1 year) Short term (less than 1 week): 4°C. Avoid freeze-thaw cycles.

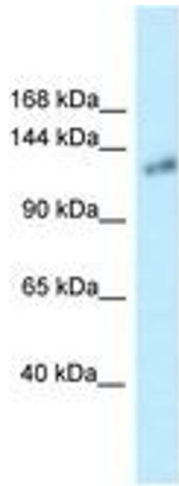


Image 1.