



Datasheet for ABIN6747661
anti-NR5A1 antibody (AA 231-280)



[Go to Product page](#)

1 Image

Overview

Quantity:	100 µL
Target:	NR5A1
Binding Specificity:	AA 231-280
Reactivity:	Human, Mouse, Rat, Guinea Pig, Dog, Pig
Host:	Rabbit
Clonality:	Polyclonal
Conjugate:	This NR5A1 antibody is un-conjugated
Application:	Western Blotting (WB)

Product Details

Immunogen:	Synthetic peptide located between aa231-280 of human NR5A1 (Q13285, NP_004950). Percent identity by BLAST analysis: Human, Chimpanzee, Gorilla, Gibbon, Monkey (100%), Marmoset (92%), Galago, Rat (85%), Mouse (78%). Type of Immunogen: Synthetic peptide
Specificity:	Human NR5A1
Predicted Reactivity:	Percent identity by BLAST analysis: Human (100%) Rat (85%).
Purification:	Immunoaffinity purified

Target Details

Target:	NR5A1
---------	-------

Target Details

Alternative Name:	NR5A1 / SF1 (NR5A1 Products)
Background:	Name/Gene ID: NR5A1 Subfamily: NR5 Fushi tarazu-like Family: NHR Synonyms: NR5A1, AD4BP, Adrenal 4 binding protein, Adrenal 4-binding protein, ELP, Steroidogenic factor-1, SRXY3, Steroidogenic factor 1, Nuclear receptor AdBP4, Nuclear receptor elp, POF7, SF-1, SPGF8, Steroid hormone receptor Ad4BP, STF-1, FTZ1, FTZF1, Fushi tarazu factor homolog 1
Gene ID:	2516
NCBI Accession:	NP_004950
UniProt:	Q13285
Pathways:	Nuclear Receptor Transcription Pathway , Steroid Hormone Mediated Signaling Pathway , Maintenance of Protein Location

Application Details

Application Notes:	Optimal working dilution should be determined by the investigator.
Comment:	Target Species of Antibody: Human
Restrictions:	For Research Use only

Handling

Format:	Lyophilized
Reconstitution:	Distilled water
Concentration:	Lot specific
Buffer:	Lyophilized from PBS with 2 % sucrose
Handling Advice:	Avoid repeat freeze-thaw cycles.
Storage:	4 °C, -20 °C
Storage Comment:	Long term: -20°C, the use of 50% glycerol is recommended if storing aliquots in -20°C for long term use (up to 1 year) Short term (less than 1 week): 4°C. Avoid freeze-thaw cycles.

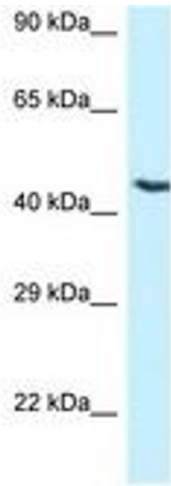


Image 1.