



[Go to Product page](#)

Datasheet for ABIN6747668

anti-MAF1 antibody (AA 54-103)

1 Image

Overview

Quantity:	100 µL
Target:	MAF1
Binding Specificity:	AA 54-103
Reactivity:	Human, Mouse, Rat, Cow, Guinea Pig, Horse, Dog, Hamster, Monkey, Pig
Host:	Rabbit
Clonality:	Polyclonal
Conjugate:	This MAF1 antibody is un-conjugated
Application:	Western Blotting (WB)

Product Details

Immunogen:	Synthetic peptide located between aa54-103 of mouse Maf1 (Q9D0U6, NP_001158079). Percent identity by BLAST analysis: Human, Gorilla, Gibbon, Monkey, Galago, Marmoset, Mouse, Rat, Hamster, Elephant, Panda, Dog, Bovine, Horse, Pig, Opossum, Guinea pig (100%), Platypus (85%). Type of Immunogen: Synthetic peptide
Specificity:	Mouse MAF1
Predicted Reactivity:	Percent identity by BLAST analysis: Human, Mouse, Rat, Dog, Bovine (100%).
Purification:	Immunoaffinity purified

Target Details

Target: MAF1

Alternative Name: MAF1 ([MAF1 Products](#))

Background: Name/Gene ID: MAF1

Synonyms: MAF1, Homolog of yeast MAF1, MAF1 homolog (*S. cerevisiae*)

Gene ID: 84232

NCBI Accession: [NP_001158079](#)

UniProt: [Q9H063](#)

Application Details

Application Notes: Optimal working dilution should be determined by the investigator.

Comment: Target Species of Antibody: Mouse

Restrictions: For Research Use only

Handling

Format: Lyophilized

Reconstitution: Distilled water

Concentration: Lot specific

Buffer: Lyophilized from PBS with 2 % sucrose

Handling Advice: Avoid repeat freeze-thaw cycles.

Storage: 4 °C, -20 °C

Storage Comment: Long term: -20°C, the use of 50% glycerol is recommended if storing aliquots in -20°C for long term use (up to 1 year)

Short term (less than 1 week): 4°C. Avoid freeze-thaw cycles.

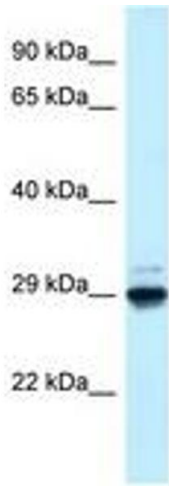


Image 1.