



[Go to Product page](#)

Datasheet for ABIN6747677  
**anti-FBXO22 antibody (AA 190-239)**

1 Image

Overview

Quantity:	100 µL
Target:	FBXO22
Binding Specificity:	AA 190-239
Reactivity:	Human, Mouse, Rat, Rabbit, Dog, Horse
Host:	Rabbit
Clonality:	Polyclonal
Conjugate:	This FBXO22 antibody is un-conjugated
Application:	Western Blotting (WB)

Product Details

Immunogen:	Synthetic peptide located between aa190-239 of mouse Fbxo22 (Q3V492, NP_082325). Percent identity by BLAST analysis: Human, Gorilla, Orangutan, Gibbon, Monkey, Mouse, Rat, Panda, Dog, Horse (100%), Marmoset, Bovine (92%), Galago, Hamster, Rabbit (85%).  Type of Immunogen: Synthetic peptide
Specificity:	Mouse FBXO22
Predicted Reactivity:	Percent identity by BLAST analysis: Human, Rat, Dog, Horse (100%) Mouse, Bovine (92%) Rabbit (85%).
Purification:	Immunoaffinity purified

## Target Details

---

Target:	FBX022
Alternative Name:	FBX022 ( <a href="#">FBX022 Products</a> )
Background:	Name/Gene ID: FBX022 Family: F-Box  Synonyms: FBX022, FBX22, FISTC1, F-box protein FBX22p44, F-box protein 22, FIST domain containing 1, F-box only protein 22
Gene ID:	26263
NCBI Accession:	<a href="#">NP_082325</a>
UniProt:	<a href="#">Q8NEZ5</a>
Pathways:	<a href="#">Regulation of Muscle Cell Differentiation, Skeletal Muscle Fiber Development</a>

## Application Details

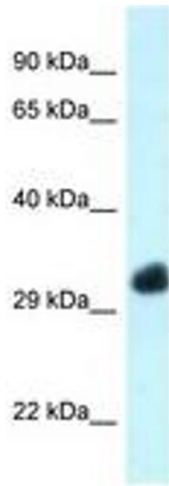
---

Application Notes:	Optimal working dilution should be determined by the investigator.
Comment:	Target Species of Antibody: Mouse
Restrictions:	For Research Use only

## Handling

---

Format:	Lyophilized
Reconstitution:	Distilled water
Concentration:	Lot specific
Buffer:	Lyophilized from PBS with 2 % sucrose
Handling Advice:	Avoid repeat freeze-thaw cycles.
Storage:	4 °C, -20 °C
Storage Comment:	Long term: -20°C, the use of 50% glycerol is recommended if storing aliquots in -20°C for long term use (up to 1 year) Short term (less than 1 week): 4°C. Avoid freeze-thaw cycles.



**Image 1.**