



[Go to Product page](#)

Datasheet for ABIN6747698  
**anti-CTNNBL1 antibody (C-Term)**

1 Image

Overview

Quantity:	100 µL
Target:	CTNNBL1
Binding Specificity:	C-Term
Reactivity:	Human, Dog, Guinea Pig, Pig, Monkey
Host:	Rabbit
Clonality:	Polyclonal
Conjugate:	This CTNNBL1 antibody is un-conjugated
Application:	Western Blotting (WB)

Product Details

Immunogen:	Synthetic peptide from C-Terminus of human CTNNBL1 (Q8WYA6, NP_110517). Percent identity by BLAST analysis: Human, Chimpanzee, Gorilla, Gibbon, Monkey, Galago, Marmoset, Elephant, Dog, Pig (100%), Mouse, Rat, Bovine, Horse (92%), Guinea pig (85%).  Type of Immunogen: Synthetic peptide
Specificity:	Human CTNNBL1
Predicted Reactivity:	Percent identity by BLAST analysis: Human, Dog (100%) Mouse, Rat, Horse (92%) Guinea pig (85%).
Purification:	Immunoaffinity purified

## Target Details

---

Target:	CTNNBL1
Alternative Name:	CTNNBL1 / NAP ( <a href="#">CTNNBL1 Products</a> )
Background:	Name/Gene ID: CTNNBL1 Family: Catenin  Synonyms: CTNNBL1, Beta-catenin-like protein 1, Catenin, beta like 1, Catenin beta like 1, C20orf33, DJ633020.1, NAP, Nuclear associated protein, Nuclear-associated protein, p14, p14L, PP8304, NYD-SP19
Gene ID:	56259
NCBI Accession:	<a href="#">NP_110517</a>
UniProt:	<a href="#">Q8WYA6</a>
Pathways:	<a href="#">Production of Molecular Mediator of Immune Response</a>

## Application Details

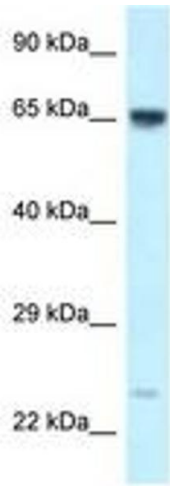
---

Application Notes:	Optimal working dilution should be determined by the investigator.
Comment:	Target Species of Antibody: Human
Restrictions:	For Research Use only

## Handling

---

Format:	Lyophilized
Reconstitution:	Distilled water
Concentration:	Lot specific
Buffer:	Lyophilized from PBS with 2 % sucrose
Handling Advice:	Avoid repeat freeze-thaw cycles.
Storage:	4 °C,-20 °C
Storage Comment:	Long term: -20°C, the use of 50% glycerol is recommended if storing aliquots in -20°C for long term use (up to 1 year) Short term (less than 1 week): 4°C. Avoid freeze-thaw cycles.



**Image 1.**