



[Go to Product page](#)

Datasheet for ABIN6747700  
**anti-POLR2M antibody (C-Term)**

1 Image

Overview

Quantity:	100 µL
Target:	POLR2M (GRINL1A)
Binding Specificity:	C-Term
Reactivity:	Human, Rat, Mouse, Hamster
Host:	Rabbit
Clonality:	Polyclonal
Conjugate:	This POLR2M antibody is un-conjugated
Application:	Western Blotting (WB)

Product Details

Immunogen:	Synthetic peptide from C-Terminus of human POLR2M (P0CAP2, NP_056347). Percent identity by BLAST analysis: Human, Chimpanzee, Gorilla, Orangutan, Mouse, Rat, Hamster (100%), Gibbon, Galago (92%), Bovine, Bat, Rabbit, Guinea pig (85%).  Type of Immunogen: Synthetic peptide
Specificity:	Human GRINL1A
Predicted Reactivity:	Percent identity by BLAST analysis:
Purification:	Immunoaffinity purified

Target Details

Target:	POLR2M (GRINL1A)
---------	------------------

## Target Details

---

Alternative Name: POLR2M ([GRINL1A Products](#))

---

Background: Name/Gene ID: POLR2M  
Subfamily: Glutamate receptor - ionotropic (NMDA receptor)  
Family: Ion Channel  
  
Synonyms: POLR2M, Gdown1, GRINL1A, N-methyl D-aspartate-like 1A, Protein GRINL1A, isoforms 4/5, Gdown, Protein GRINL1A

---

Gene ID: 81488

---

NCBI Accession: [NP\\_056347](#)

---

UniProt: [P0CAP2](#)

---

## Application Details

---

Application Notes: Optimal working dilution should be determined by the investigator.

---

Comment: Target Species of Antibody: Human

---

Restrictions: For Research Use only

---

## Handling

---

Format: Lyophilized

---

Reconstitution: Distilled water

---

Concentration: Lot specific

---

Buffer: Lyophilized from PBS with 2 % sucrose

---

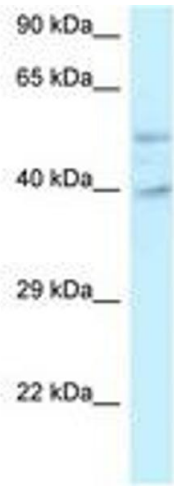
Handling Advice: Avoid repeat freeze-thaw cycles.

---

Storage: 4 °C,-20 °C

---

Storage Comment: Long term: -20°C, the use of 50% glycerol is recommended if storing aliquots in -20°C for long term use (up to 1 year)  
Short term (less than 1 week): 4°C. Avoid freeze-thaw cycles.



**Image 1.**