



Datasheet for ABIN6747701  
**anti-POLR2M antibody (AA 283-332)**



[Go to Product page](#)

1 Image

Overview

Quantity:	100 µL
Target:	POLR2M (GRINL1A)
Binding Specificity:	AA 283-332
Reactivity:	Human, Rat, Rabbit
Host:	Rabbit
Clonality:	Polyclonal
Conjugate:	This POLR2M antibody is un-conjugated
Application:	Western Blotting (WB)

Product Details

Immunogen:	Synthetic peptide located between aa283-332 of human POLR2M (POCAP2, NP_056347). Percent identity by BLAST analysis: Human, Chimpanzee, Gorilla, Gibbon, Rat, Rabbit (100%), Galago, Hamster, Elephant, Panda, Dog, Horse, Opossum (92%), Guinea pig (91%), Orangutan, Mouse, Bat (85%).  Type of Immunogen: Synthetic peptide
Specificity:	Human GRINL1A
Predicted Reactivity:	Percent identity by BLAST analysis:
Purification:	Immunoaffinity purified

## Target Details

---

Target:	POLR2M (GRINL1A)
Alternative Name:	POLR2M ( <a href="#">GRINL1A Products</a> )
Background:	Name/Gene ID: POLR2M Subfamily: Glutamate receptor - ionotropic (NMDA receptor) Family: Ion Channel  Synonyms: POLR2M, Gdown1, GRINL1A, N-methyl D-aspartate-like 1A, Protein GRINL1A, isoforms 4/5, Gdown, Protein GRINL1A
Gene ID:	81488
NCBI Accession:	<a href="#">NP_056347</a>
UniProt:	<a href="#">P0CAP2</a>

## Application Details

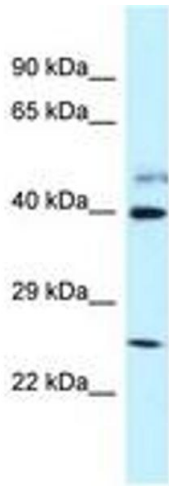
---

Application Notes:	Optimal working dilution should be determined by the investigator.
Comment:	Target Species of Antibody: Human
Restrictions:	For Research Use only

## Handling

---

Format:	Lyophilized
Reconstitution:	Distilled water
Concentration:	Lot specific
Buffer:	Lyophilized from PBS with 2 % sucrose
Handling Advice:	Avoid repeat freeze-thaw cycles.
Storage:	4 °C, -20 °C
Storage Comment:	Long term: -20°C, the use of 50% glycerol is recommended if storing aliquots in -20°C for long term use (up to 1 year) Short term (less than 1 week): 4°C. Avoid freeze-thaw cycles.



**Image 1.**