

Datasheet for ABIN6747743  
**anti-ATP6V1C2 antibody (AA 287-336)**



[Go to Product page](#)

1 Image

Overview

Quantity:	100 µL
Target:	ATP6V1C2
Binding Specificity:	AA 287-336
Reactivity:	Human, Cow, Dog, Horse, Pig
Host:	Rabbit
Clonality:	Polyclonal
Conjugate:	This ATP6V1C2 antibody is un-conjugated
Application:	Western Blotting (WB)

Product Details

Immunogen:	Synthetic peptide located between aa287-336 of human ATP6V1C2 (A8KA87, NP_653184). Percent identity by BLAST analysis: Human, Chimpanzee, Gorilla, Gibbon, Elephant, Panda, Dog, Pig (100%), Galago, Mouse, Rat, Bat, Rabbit, Guinea pig, Platypus (92%), Marmoset, Bovine, Horse, Opossum, Lizard (85%).  Type of Immunogen: Synthetic peptide
Specificity:	Human ATP6V1C2
Predicted Reactivity:	Percent identity by BLAST analysis: Dog, Pig (100%) Mouse, Rabbit, Guinea pig (92%) Bovine, Horse (85%).
Purification:	Immunoaffinity purified

## Target Details

---

Target:	ATP6V1C2
Alternative Name:	ATP6V1C2 ( <a href="#">ATP6V1C2 Products</a> )
Background:	Name/Gene ID: ATP6V1C2  Synonyms: ATP6V1C2, ATP6C2, V-ATPase subunit C 2, Vma5, V-ATPase C2 subunit
Gene ID:	245973
NCBI Accession:	<a href="#">NP_653184</a>
Pathways:	<a href="#">Transition Metal Ion Homeostasis</a> , <a href="#">Proton Transport</a>

## Application Details

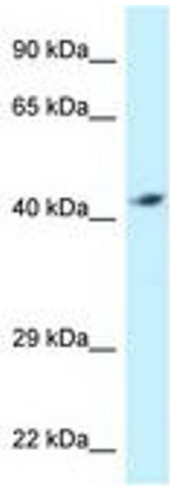
---

Application Notes:	Optimal working dilution should be determined by the investigator.
Comment:	Target Species of Antibody: Human
Restrictions:	For Research Use only

## Handling

---

Format:	Lyophilized
Reconstitution:	Distilled water
Concentration:	Lot specific
Buffer:	Lyophilized from PBS with 2 % sucrose
Handling Advice:	Avoid repeat freeze-thaw cycles.
Storage:	4 °C, -20 °C
Storage Comment:	Long term: -20°C, the use of 50% glycerol is recommended if storing aliquots in -20°C for long term use (up to 1 year) Short term (less than 1 week): 4°C. Avoid freeze-thaw cycles.



**Image 1.**