



Datasheet for ABIN6747745  
**anti-MOXD1 antibody (AA 434-483)**



[Go to Product page](#)

1 Image

Overview

Quantity:	100 µL
Target:	MOXD1
Binding Specificity:	AA 434-483
Reactivity:	Human, Guinea Pig, Horse, Rabbit, Zebrafish (Danio rerio)
Host:	Rabbit
Clonality:	Polyclonal
Conjugate:	This MOXD1 antibody is un-conjugated
Application:	Western Blotting (WB)

Product Details

Immunogen:	Synthetic peptide located between aa434-483 of human MOXD1 (Q6UVY6-2, NP_056344). Percent identity by BLAST analysis: Human, Chimpanzee, Gorilla, Gibbon, Baboon, Monkey, Galago (100%), Marmoset, Mouse, Rat, Elephant, Dog, Bovine, Bat, Pig (92%), Shrew (91%), Panda, Rabbit, Horse, Opossum, Guinea pig, Armadillo (85%).  Type of Immunogen: Synthetic peptide
Specificity:	Human MOXD1
Predicted Reactivity:	Percent identity by BLAST analysis: Human (100%) Mouse, Rat, Dog, Bovine, Pig (92%) Rabbit, Horse, Guinea pig (85%).
Purification:	Immunoaffinity purified

## Target Details

---

Target:	MOXD1
Alternative Name:	MOX / MOXD1 ( <a href="#">MOXD1 Products</a> )
Background:	Name/Gene ID: MOXD1  Synonyms: MOXD1, DKFZP564G202, DJ248E1.1, Dopamine-oxygenase, Monooxygenase, DBH-like 1, Monooxygenase X, MOX, PRO5780
Gene ID:	26002
NCBI Accession:	<a href="#">NP_056344</a>

## Application Details

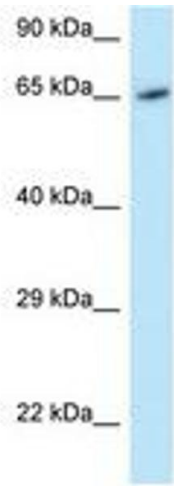
---

Application Notes:	Optimal working dilution should be determined by the investigator.
Comment:	Target Species of Antibody: Human
Restrictions:	For Research Use only

## Handling

---

Format:	Lyophilized
Reconstitution:	Distilled water
Concentration:	Lot specific
Buffer:	Lyophilized from PBS with 2 % sucrose
Handling Advice:	Avoid repeat freeze-thaw cycles.
Storage:	4 °C, -20 °C
Storage Comment:	Long term: -20°C, the use of 50% glycerol is recommended if storing aliquots in -20°C for long term use (up to 1 year) Short term (less than 1 week): 4°C. Avoid freeze-thaw cycles.



**Image 1.**