



[Go to Product page](#)

Datasheet for ABIN6747755
anti-ETS2 antibody (AA 311-360)

1 Image

Overview

| | |
|----------------------|---|
| Quantity: | 100 µL |
| Target: | ETS2 |
| Binding Specificity: | AA 311-360 |
| Reactivity: | Human, Mouse, Rat, Dog, Guinea Pig, Monkey, Pig |
| Host: | Rabbit |
| Clonality: | Polyclonal |
| Conjugate: | This ETS2 antibody is un-conjugated |
| Application: | Western Blotting (WB) |

Product Details

| | |
|-----------------------|--|
| Immunogen: | Synthetic peptide located between aa311-360 of mouse ETS2 (P15036, NP_001120734). Percent identity by BLAST analysis: Human, Chimpanzee, Gorilla, Orangutan, Gibbon, Monkey, Galago, Marmoset, Mouse, Rat, Elephant, Panda, Dog, Pig, Opossum, Guinea pig, Zebra finch, Platypus, Lizard (100%), Bovine, Bat, Horse, Turkey, Chicken (92%), Rabbit (91%). Type of Immunogen: Synthetic peptide |
| Specificity: | Mouse ETS2 |
| Predicted Reactivity: | Percent identity by BLAST analysis: Human, Mouse, Rat, Dog, Pig, Guinea pig (100%) Bovine, Chicken (92%) Rabbit (91%). |
| Purification: | Immunoaffinity purified |

Target Details

| | |
|-------------------|--|
| Target: | ETS2 |
| Alternative Name: | ETS2 (ETS2 Products) |
| Background: | Name/Gene ID: ETS2 Synonyms: ETS2, c-ets2, Oncogene ETS-2, Protein C-ets-2, ETS2IT1 |
| Gene ID: | 2114 |
| NCBI Accession: | NP_001120734 |
| UniProt: | P15036 |
| Pathways: | EGFR Signaling Pathway , Myometrial Relaxation and Contraction |

Application Details

| | |
|--------------------|--|
| Application Notes: | Optimal working dilution should be determined by the investigator. |
| Comment: | Target Species of Antibody: Mouse |
| Restrictions: | For Research Use only |

Handling

| | |
|------------------|---|
| Format: | Lyophilized |
| Reconstitution: | Distilled water |
| Concentration: | Lot specific |
| Buffer: | Lyophilized from PBS with 2 % sucrose |
| Handling Advice: | Avoid repeat freeze-thaw cycles. |
| Storage: | 4 °C,-20 °C |
| Storage Comment: | Long term: -20°C, the use of 50% glycerol is recommended if storing aliquots in -20°C for long term use (up to 1 year) Short term (less than 1 week): 4°C. Avoid freeze-thaw cycles. |

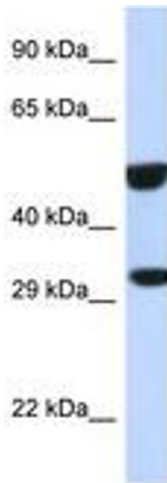


Image 1.