



[Go to Product page](#)

Datasheet for ABIN6747763  
**anti-DCAF11 antibody (AA 335-384)**

1 Image

### Overview

Quantity:	100 µL
Target:	DCAF11
Binding Specificity:	AA 335-384
Reactivity:	Human, Mouse, Rat, Guinea Pig, Rabbit, Cow, Dog, Horse, Zebrafish (Danio rerio), Monkey, Bat, Hamster, Pig
Host:	Rabbit
Clonality:	Polyclonal
Conjugate:	This DCAF11 antibody is un-conjugated
Application:	Western Blotting (WB)

### Product Details

Immunogen:	Synthetic peptide located between aa335-384 of mouse Dcaf11 (Q9EQQ2, NP_075800). Percent identity by BLAST analysis: Human, Chimpanzee, Orangutan, Gibbon, Monkey, Galago, Marmoset, Mouse, Rat, Hamster, Elephant, Panda, Dog, Bovine, Bat, Rabbit, Horse, Pig, Guinea pig, Stickleback, Zebrafish (100%), Opossum, Xenopus (92%), Grape (84%), Nematode (83%).  Type of Immunogen: Synthetic peptide
Specificity:	Mouse DCAF11 / WDR23
Predicted Reactivity:	Percent identity by BLAST analysis: Human, Mouse, Dog, Bovine, Rabbit, Zebrafish (100%) Xenopus (92%).
Purification:	Immunoaffinity purified

## Target Details

---

Target: DCAF11

Alternative Name: WDR23 / DCAF11 ([DCAF11 Products](#))

Background: Name/Gene ID: DCAF11

Synonyms: DCAF11, WD repeat domain 23, WDR23, GL014, PRO2389

Gene ID: 80344

NCBI Accession: [NP\\_075800](#)

UniProt: [Q8TEB1](#)

## Application Details

---

Application Notes: Optimal working dilution should be determined by the investigator.

Comment: Target Species of Antibody: Mouse

Restrictions: For Research Use only

## Handling

---

Format: Lyophilized

Reconstitution: Distilled water

Concentration: Lot specific

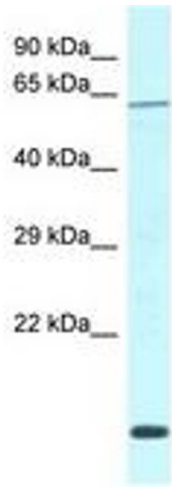
Buffer: Lyophilized from PBS with 2 % sucrose

Handling Advice: Avoid repeat freeze-thaw cycles.

Storage: 4 °C, -20 °C

Storage Comment: Long term: -20°C, the use of 50% glycerol is recommended if storing aliquots in -20°C for long term use (up to 1 year)

Short term (less than 1 week): 4°C. Avoid freeze-thaw cycles.



**Image 1.**