



Datasheet for ABIN6747770
anti-CAMSAP1 antibody (AA 1290-1339)



[Go to Product page](#)

1 Image

Overview

Quantity:	100 µL
Target:	CAMSAP1
Binding Specificity:	AA 1290-1339
Reactivity:	Human, Mouse, Monkey, Zebrafish (Danio rerio)
Host:	Rabbit
Clonality:	Polyclonal
Conjugate:	This CAMSAP1 antibody is un-conjugated
Application:	Western Blotting (WB)

Product Details

Immunogen:	Synthetic peptide located between aa1290-1339 of mouse CAMSAP1 (Q5T5Y3, NP_056262). Percent identity by BLAST analysis: Human, Chimpanzee, Gorilla, Gibbon, Monkey, Marmoset, Zebrafish (100%), Galago, Mouse, Elephant, Panda, Dog, Bovine, Bat, Horse, Pig, Opossum, Guinea pig, Turkey, Chicken, Platypus (92%), Xenopus (85%), Drosophila (80%). Type of Immunogen: Synthetic peptide
Specificity:	Human CAMSAP1
Predicted Reactivity:	Percent identity by BLAST analysis: Human, Zebrafish (100%) Dog, Bovine, Horse, Pig, Guinea pig, Chicken (92%).
Purification:	Immunoaffinity purified

Target Details

Target:	CAMSAP1
Alternative Name:	CAMSAP1 (CAMSAP1 Products)
Background:	Name/Gene ID: CAMSAP1 Synonyms: CAMSAP1, BA100C15.1, BA100C15.1 (novel protein), PRO2405, RP11-100C15.2
Gene ID:	157922
NCBI Accession:	NP_056262
UniProt:	Q5T5Y3

Application Details

Application Notes:	Optimal working dilution should be determined by the investigator.
Comment:	Target Species of Antibody: Mouse
Restrictions:	For Research Use only

Handling

Format:	Lyophilized
Reconstitution:	Distilled water
Concentration:	Lot specific
Buffer:	Lyophilized from PBS with 2 % sucrose
Handling Advice:	Avoid repeat freeze-thaw cycles.
Storage:	4 °C, -20 °C
Storage Comment:	Long term: -20°C, the use of 50% glycerol is recommended if storing aliquots in -20°C for long term use (up to 1 year) Short term (less than 1 week): 4°C. Avoid freeze-thaw cycles.

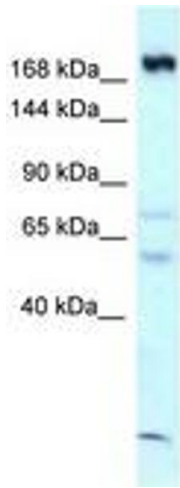


Image 1.