



[Go to Product page](#)

Datasheet for ABIN6747776
anti-PPP6R3 antibody (AA 201-250)

1 Image

Overview

Quantity:	100 µL
Target:	PPP6R3
Binding Specificity:	AA 201-250
Reactivity:	Human, Mouse, Rat, Rabbit, Dog, Guinea Pig, Horse, Monkey, Pig, Bat
Host:	Rabbit
Clonality:	Polyclonal
Conjugate:	This PPP6R3 antibody is un-conjugated
Application:	Western Blotting (WB)

Product Details

Immunogen:	Synthetic peptide located between aa201-250 of human PPP6R3 (Q5H9R7-4, NP_060782). Percent identity by BLAST analysis: Human, Chimpanzee, Gorilla, Orangutan, Gibbon, Monkey, Galago, Marmoset, Mouse, Rat, Elephant, Panda, Dog, Bat, Rabbit, Horse, Pig, Guinea pig, Platypus (100%), Goat, Bovine, Turkey, Zebra finch, Chicken, Lizard, Xenopus, Salmon, Stickleback, Zebrafish (92%), Opossum (83%). Type of Immunogen: Synthetic peptide
Specificity:	Human PPP6R3 / SAPS3
Predicted Reactivity:	Percent identity by BLAST analysis: Human, Mouse, Dog, Rabbit, Pig, Guinea pig (100%) Bovine, Zebrafish (92%).
Purification:	Immunoaffinity purified

Target Details

Target:	PPP6R3
Alternative Name:	PPP6R3 (PPP6R3 Products)
Background:	Name/Gene ID: PPP6R3 Synonyms: PPP6R3, C11orf23, KIAA1558, SAPL, SAPS domain family, member 3, SAPLa, SAPS3, PP6R3, SAP190, SAPS domain family member 3
NCBI Accession:	NP_060782

Application Details

Application Notes:	Optimal working dilution should be determined by the investigator.
Comment:	Target Species of Antibody: Human
Restrictions:	For Research Use only

Handling

Format:	Lyophilized
Reconstitution:	Distilled water
Concentration:	Lot specific
Buffer:	Lyophilized from PBS with 2 % sucrose
Handling Advice:	Avoid repeat freeze-thaw cycles.
Storage:	4 °C,-20 °C
Storage Comment:	Long term: -20°C, the use of 50% glycerol is recommended if storing aliquots in -20°C for long term use (up to 1 year) Short term (less than 1 week): 4°C. Avoid freeze-thaw cycles.

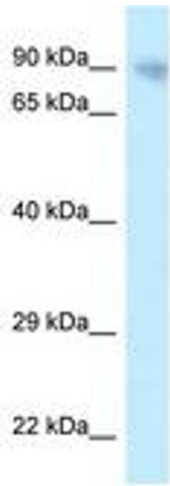


Image 1.