



[Go to Product page](#)

Datasheet for ABIN6747788  
**anti-SIRPG antibody (AA 109-158)**

1 Image

Overview

Quantity:	100 µL
Target:	SIRPG
Binding Specificity:	AA 109-158
Reactivity:	Human, Cow, Monkey
Host:	Rabbit
Clonality:	Polyclonal
Conjugate:	This SIRPG antibody is un-conjugated
Application:	Western Blotting (WB)

Product Details

Immunogen:	Synthetic peptide located between aa109-158 of human SIRPG (075131, NP_003900). Percent identity by BLAST analysis: Human, Gorilla, Monkey (100%), Gibbon (92%), Bovine (85%).  Type of Immunogen: Synthetic peptide
Specificity:	Human SIRPG
Predicted Reactivity:	Percent identity by BLAST analysis: Human (100%) Bovine (85%).
Purification:	Immunoaffinity purified

Target Details

Target:	SIRPG
Alternative Name:	SIRPG ( <a href="#">SIRPG Products</a> )

## Target Details

---

Background:	Name/Gene ID: SIRPG  Synonyms: SIRPG, BA77C3.1, CD172g antigen, CD172g, SIRP beta 2, SIRP-beta-2, SIRP-gamma, SIRPgamma, SIRP-B2
Gene ID:	55423
NCBI Accession:	<a href="#">NP_003900</a>
UniProt:	<a href="#">Q9P1W8</a>

## Application Details

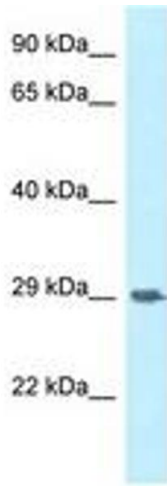
---

Application Notes:	Optimal working dilution should be determined by the investigator.
Comment:	Target Species of Antibody: Human
Restrictions:	For Research Use only

## Handling

---

Format:	Lyophilized
Reconstitution:	Distilled water
Concentration:	Lot specific
Buffer:	Lyophilized from PBS with 2 % sucrose
Handling Advice:	Avoid repeat freeze-thaw cycles.
Storage:	4 °C,-20 °C
Storage Comment:	Long term: -20°C, the use of 50% glycerol is recommended if storing aliquots in -20°C for long term use (up to 1 year) Short term (less than 1 week): 4°C. Avoid freeze-thaw cycles.



**Image 1.**