



Datasheet for ABIN6747797
anti-MTFR1 antibody (AA 199-248)



[Go to Product page](#)

1 Image

Overview

Quantity:	100 µL
Target:	MTFR1
Binding Specificity:	AA 199-248
Reactivity:	Human, Mouse, Rat, Dog, Rabbit
Host:	Rabbit
Clonality:	Polyclonal
Conjugate:	This MTFR1 antibody is un-conjugated
Application:	Western Blotting (WB)

Product Details

Immunogen:	Synthetic peptide located between aa199-248 of human MTFR1 (Q9NRX1, NP_064528). Percent identity by BLAST analysis: Human, Gorilla, Orangutan, Gibbon, Monkey (100%), Marmoset (92%), Dog, Rabbit (85%), Mouse, Rat (78%). Type of Immunogen: Synthetic peptide
Specificity:	Human MTFR1
Predicted Reactivity:	Percent identity by BLAST analysis: Human (100%) Dog, Rabbit (85%).
Purification:	Immunoaffinity purified

Target Details

Target:	MTFR1
---------	-------

Target Details

Alternative Name:	MTFR1 (MTFR1 Products)
Background:	Name/Gene ID: MTFR1 Synonyms: MTFR1, CHPPR, FAM54A2, KIAA0009
Gene ID:	9650
NCBI Accession:	NP_064528
UniProt:	Q15390

Application Details

Application Notes:	Optimal working dilution should be determined by the investigator.
Comment:	Target Species of Antibody: Human
Restrictions:	For Research Use only

Handling

Format:	Lyophilized
Reconstitution:	Distilled water
Concentration:	Lot specific
Buffer:	Lyophilized from PBS with 2 % sucrose
Handling Advice:	Avoid repeat freeze-thaw cycles.
Storage:	4 °C,-20 °C
Storage Comment:	Long term: -20°C, the use of 50% glycerol is recommended if storing aliquots in -20°C for long term use (up to 1 year) Short term (less than 1 week): 4°C. Avoid freeze-thaw cycles.

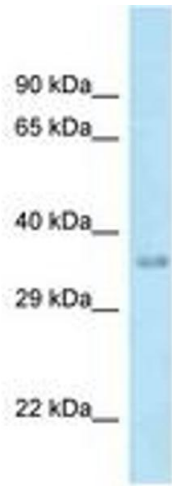


Image 1.