



[Go to Product page](#)

Datasheet for ABIN6747811
anti-Zfp872 antibody (AA 121-170)

1 Image

Overview

Quantity:	100 µL
Target:	Zfp872 (ZFP872)
Binding Specificity:	AA 121-170
Reactivity:	Cow, Horse, Human, Mouse, Rat, Bat, Monkey, Pig
Host:	Rabbit
Clonality:	Polyclonal
Conjugate:	This Zfp872 antibody is un-conjugated
Application:	Western Blotting (WB)

Product Details

Immunogen:	Synthetic peptide located between aa121-170 of mouse Zfp872 (NP_001028985). Percent identity by BLAST analysis: Human, Gorilla, Orangutan, Gibbon, Monkey, Galago, Marmoset, Mouse, Rat, Bovine, Bat, Horse, Pig (100%), Xenopus (92%), Rabbit, Opossum, Zebrafish (91%). Type of Immunogen: Synthetic peptide
Specificity:	Mouse Zfp872
Predicted Reactivity:	Percent identity by BLAST analysis: Mouse (100%).
Purification:	Immunoaffinity purified

Target Details

Target:	Zfp872 (ZFP872)
---------	-----------------

Target Details

Alternative Name:	Zfp872 (ZFP872 Products)
Background:	Name/Gene ID: Zfp872 Synonyms: Zfp872, Zinc finger protein 872
Gene ID:	619310
NCBI Accession:	NP_001028985

Application Details

Application Notes:	Optimal working dilution should be determined by the investigator.
Comment:	Target Species of Antibody: Mouse
Restrictions:	For Research Use only

Handling

Format:	Lyophilized
Reconstitution:	Distilled water
Concentration:	Lot specific
Buffer:	Lyophilized from PBS with 2 % sucrose
Handling Advice:	Avoid repeat freeze-thaw cycles.
Storage:	4 °C, -20 °C
Storage Comment:	Long term: -20°C, the use of 50% glycerol is recommended if storing aliquots in -20°C for long term use (up to 1 year) Short term (less than 1 week): 4°C. Avoid freeze-thaw cycles.

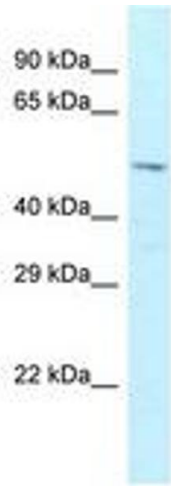


Image 1.