

Datasheet for ABIN6747815
anti-DHRXS antibody (AA 32-81)



[Go to Product page](#)

1 Image

Overview

Quantity:	100 µL
Target:	DHRXS
Binding Specificity:	AA 32-81
Reactivity:	Human, Cow
Host:	Rabbit
Clonality:	Polyclonal
Conjugate:	This DHRXS antibody is un-conjugated
Application:	Western Blotting (WB)

Product Details

Immunogen:	Synthetic peptide located between aa32-81 of human DHRXS (Q8N5I4, NP_660160). Percent identity by BLAST analysis: Human, Bovine (100%), Elephant (92%), Galago (91%), Platypus (85%). Type of Immunogen: Synthetic peptide
Specificity:	Human DHRXS
Predicted Reactivity:	Percent identity by BLAST analysis: Human (100%).
Purification:	Immunoaffinity purified

Target Details

Target:	DHRXS
---------	-------

Target Details

Alternative Name:	DHR SX (DHR SX Products)
Background:	Name/Gene ID: DHR SX Synonyms: DHR SX, CXorf11, DHR S5Y, DHR SX Y, DHR SY, SDR46C1, DHR S5X
Gene ID:	207063
NCBI Accession:	NP_660160
UniProt:	Q8N5I4

Application Details

Application Notes:	Optimal working dilution should be determined by the investigator.
Comment:	Target Species of Antibody: Human
Restrictions:	For Research Use only

Handling

Format:	Lyophilized
Reconstitution:	Distilled water
Concentration:	Lot specific
Buffer:	Lyophilized from PBS with 2 % sucrose
Handling Advice:	Avoid repeat freeze-thaw cycles.
Storage:	4 °C, -20 °C
Storage Comment:	Long term: -20°C, the use of 50% glycerol is recommended if storing aliquots in -20°C for long term use (up to 1 year) Short term (less than 1 week): 4°C. Avoid freeze-thaw cycles.

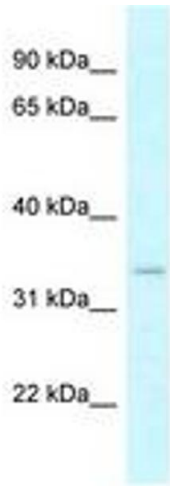


Image 1.