

Datasheet for ABIN6747819
anti-HSD17B11 antibody (AA 100-149)



[Go to Product page](#)

1 Image

Overview

Quantity:	100 µL
Target:	HSD17B11
Binding Specificity:	AA 100-149
Reactivity:	Human, Mouse, Cow, Dog, Horse, Rabbit, Bat
Host:	Rabbit
Clonality:	Polyclonal
Conjugate:	This HSD17B11 antibody is un-conjugated
Application:	Western Blotting (WB)

Product Details

Immunogen:	Synthetic peptide located between aa100-149 of mouse Hsd17b11 (Q9EQ06, NP_444492). Percent identity by BLAST analysis: Human, Gorilla, Orangutan, Gibbon, Galago, Marmoset, Mouse, Dog, Bovine, Bat, Rabbit, Horse, Opossum (100%), Monkey, Rat, Platypus (92%), Elephant (85%). Type of Immunogen: Synthetic peptide
Specificity:	Mouse HSD17B11
Predicted Reactivity:	Percent identity by BLAST analysis: Dog, Bovine (100%) Mouse (92%).
Purification:	Immunoaffinity purified

Target Details

Target:	HSD17B11
Alternative Name:	HSD17B11 (HSD17B11 Products)
Background:	Name/Gene ID: HSD17B11 Synonyms: HSD17B11, 17-beta-HSD 11, 17-BETA-HSDXI, 17betaHSD11, 17-beta-HSD XI, 17-BETA-HSD11, 17betaHSDXI, 17BHSD11, CTCL tumor antigen HD-CL-03, DHRS8, RetSDR2, SDR16C2, PAN1B
Gene ID:	51170
NCBI Accession:	NP_444492
UniProt:	Q8NBQ5

Application Details

Application Notes:	Optimal working dilution should be determined by the investigator.
Comment:	Target Species of Antibody: Mouse
Restrictions:	For Research Use only

Handling

Format:	Lyophilized
Reconstitution:	Distilled water
Concentration:	Lot specific
Buffer:	Lyophilized from PBS with 2 % sucrose
Handling Advice:	Avoid repeat freeze-thaw cycles.
Storage:	4 °C,-20 °C
Storage Comment:	Long term: -20°C, the use of 50% glycerol is recommended if storing aliquots in -20°C for long term use (up to 1 year) Short term (less than 1 week): 4°C. Avoid freeze-thaw cycles.

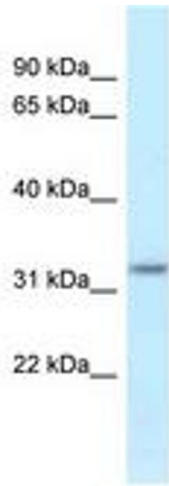


Image 1.