

Datasheet for ABIN6747825
anti-LYNX1 antibody (AA 40-89)



[Go to Product page](#)

1 Image

Overview

Quantity:	100 µL
Target:	LYNX1
Binding Specificity:	AA 40-89
Reactivity:	Human, Mouse, Rat, Cow, Guinea Pig, Monkey
Host:	Rabbit
Clonality:	Polyclonal
Conjugate:	This LYNX1 antibody is un-conjugated
Application:	Western Blotting (WB)

Product Details

Immunogen:	Synthetic peptide located between aa40-89 of mouse Lynx1 (Q9WVC2, NP_035968). Percent identity by BLAST analysis: Human, Chimpanzee, Gorilla, Gibbon, Monkey, Marmoset, Mouse, Rat, Bovine, Guinea pig (100%), Elephant, Panda, Bat (92%). Type of Immunogen: Synthetic peptide
Specificity:	Mouse LYNX1 - Isoform 2
Predicted Reactivity:	Percent identity by BLAST analysis: Human, Bovine (100%) Mouse, Rat (92%).
Purification:	Immunoaffinity purified

Target Details

Target:	LYNX1
---------	-------

Target Details

Alternative Name: [LYNX1 \(LYNX1 Products\)](#)

Background: Name/Gene ID: LYNX1

Synonyms: LYNX1, Ly-6/neurotoxin-like protein 1, SLURP-2, SLURP2, Ly-6 neurotoxin-like protein 1, Ly6/neurotoxin 1

Gene ID: 66004

NCBI Accession: [NP_035968](#)

UniProt: [Q9BZG9](#)

Application Details

Application Notes: Optimal working dilution should be determined by the investigator.

Comment: Target Species of Antibody: Mouse

Restrictions: For Research Use only

Handling

Format: Lyophilized

Reconstitution: Distilled water

Concentration: Lot specific

Buffer: Lyophilized from PBS with 2 % sucrose

Handling Advice: Avoid repeat freeze-thaw cycles.

Storage: 4 °C, -20 °C

Storage Comment: Long term: -20°C, the use of 50% glycerol is recommended if storing aliquots in -20°C for long term use (up to 1 year)

Short term (less than 1 week): 4°C. Avoid freeze-thaw cycles.

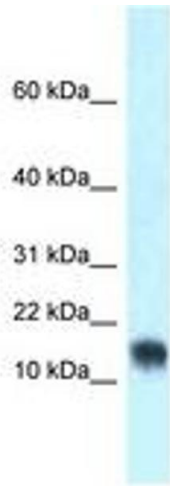


Image 1.