



[Go to Product page](#)

Datasheet for ABIN6747827
anti-UQCRC1 antibody (AA 84-133)

1 Image

Overview

| | |
|----------------------|---------------------------------------|
| Quantity: | 100 µL |
| Target: | UQCRC1 |
| Binding Specificity: | AA 84-133 |
| Reactivity: | Human, Rat, Rabbit, Guinea Pig, Pig |
| Host: | Rabbit |
| Clonality: | Polyclonal |
| Conjugate: | This UQCRC1 antibody is un-conjugated |
| Application: | Western Blotting (WB) |

Product Details

| | |
|-----------------------|--|
| Immunogen: | Synthetic peptide located between aa84-133 of human UQCRC1 (P31930, NP_003356). Percent identity by BLAST analysis: Human, Chimpanzee, Gorilla, Rat, Elephant, Rabbit, Pig, Guinea pig (100%), Marmoset, Mouse, Hamster, Panda, Dog, Bovine, Bat, Horse, Platypus, Xenopus (92%), Galago, Opossum (85%). Type of Immunogen: Synthetic peptide |
| Specificity: | Human UQCRC1 |
| Predicted Reactivity: | Percent identity by BLAST analysis: Rabbit (100%) Mouse, Dog, Bovine (92%). |
| Purification: | Immunoaffinity purified |

Target Details

| | |
|-------------------|--|
| Target: | UQCRC1 |
| Alternative Name: | UQCRC1 (UQCRC1 Products) |
| Background: | Name/Gene ID: UQCRC1 Subfamily: Metallopeptidase M16 Family: Protease Synonyms: UQCRC1, Complex III subunit 1, D3S3191, Core protein I, QCR1, UQCR1 |
| Gene ID: | 7384 |
| NCBI Accession: | NP_003356 |
| UniProt: | P31930 |

Application Details

| | |
|--------------------|--|
| Application Notes: | Optimal working dilution should be determined by the investigator. |
| Comment: | Target Species of Antibody: Human |
| Restrictions: | For Research Use only |

Handling

| | |
|------------------|---|
| Format: | Lyophilized |
| Reconstitution: | Distilled water |
| Concentration: | Lot specific |
| Buffer: | Lyophilized from PBS with 2 % sucrose |
| Handling Advice: | Avoid repeat freeze-thaw cycles. |
| Storage: | 4 °C,-20 °C |
| Storage Comment: | Long term: -20°C, the use of 50% glycerol is recommended if storing aliquots in -20°C for long term use (up to 1 year) Short term (less than 1 week): 4°C. Avoid freeze-thaw cycles. |

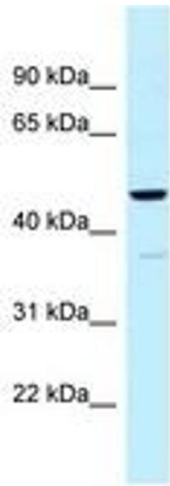


Image 1.