



[Go to Product page](#)

Datasheet for ABIN6747834  
**anti-ENTPD5 antibody (AA 85-134)**

1 Image

Overview

Quantity:	100 µL
Target:	ENTPD5
Binding Specificity:	AA 85-134
Reactivity:	Human, Mouse, Rat, Cow, Dog, Guinea Pig, Horse, Rabbit, Bat, Monkey, Pig
Host:	Rabbit
Clonality:	Polyclonal
Conjugate:	This ENTPD5 antibody is un-conjugated
Application:	Western Blotting (WB)

Product Details

Immunogen:	Synthetic peptide located between aa85-134 of human ENTPD5 (O75356, NP_001240). Percent identity by BLAST analysis: Human, Chimpanzee, Gorilla, Gibbon, Monkey, Galago, Marmoset, Mouse, Rat, Elephant, Panda, Dog, Bovine, Bat, Horse, Pig, Guinea pig (100%), Hamster (92%), Rabbit, Opossum (85%).  Type of Immunogen: Synthetic peptide
Specificity:	Human ENTPD5
Predicted Reactivity:	Percent identity by BLAST analysis: Human, Mouse, Rat, Dog, Bovine, Horse, Pig, Guinea pig (100%) Rabbit (85%).
Purification:	Immunoaffinity purified

## Target Details

---

Target:	ENTPD5
Alternative Name:	ENTPD5 / CD39L4 ( <a href="#">ENTPD5 Products</a> )
Background:	Name/Gene ID: ENTPD5  Synonyms: ENTPD5, CD39L4, CD39 antigen-like 4, CD39-like 4, GDPase ENTPD5, PCPH, NTPDase 5, Nucleoside diphosphatase, UDPase ENTPD5, ER-UDPase, Guanosine-diphosphatase ENTPD5, NTPDase-5, PcpH proto-oncogene protein, Proto-oncogene CPH, Uridine-diphosphatase ENTPD5
Gene ID:	957
NCBI Accession:	<a href="#">NP_001240</a>
UniProt:	<a href="#">O75356</a>

## Application Details

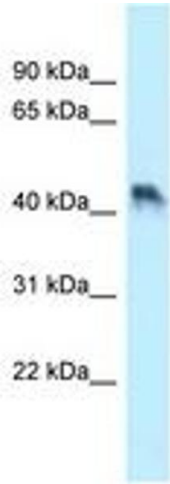
---

Application Notes:	Optimal working dilution should be determined by the investigator.
Comment:	Target Species of Antibody: Human
Restrictions:	For Research Use only

## Handling

---

Format:	Lyophilized
Reconstitution:	Distilled water
Concentration:	Lot specific
Buffer:	Lyophilized from PBS with 2 % sucrose
Handling Advice:	Avoid repeat freeze-thaw cycles.
Storage:	4 °C, -20 °C
Storage Comment:	Long term: -20°C, the use of 50% glycerol is recommended if storing aliquots in -20°C for long term use (up to 1 year)  Short term (less than 1 week): 4°C. Avoid freeze-thaw cycles.



**Image 1.**