



[Go to Product page](#)

Datasheet for ABIN6747838
anti-TTC1 antibody (AA 99-148)

1 Image

Overview

Quantity:	100 µL
Target:	TTC1
Binding Specificity:	AA 99-148
Reactivity:	Human, Mouse, Rat, Cow, Dog, Rabbit, Monkey
Host:	Rabbit
Clonality:	Polyclonal
Conjugate:	This TTC1 antibody is un-conjugated
Application:	Western Blotting (WB)

Product Details

Immunogen:	Synthetic peptide located between aa99-148 of human TTC1 (Q99614, NP_003305). Percent identity by BLAST analysis: Human, Chimpanzee, Gorilla, Gibbon, Monkey, Marmoset (100%), Panda, Bat, Horse, Guinea pig (92%), Galago, Mouse, Rat, Dog (85%). Type of Immunogen: Synthetic peptide
Specificity:	Human TTC1
Predicted Reactivity:	Percent identity by BLAST analysis: Human (100%) Guinea pig (92%) Mouse, Rat, Dog (85%).
Purification:	Immunoaffinity purified

Target Details

Target:	TTC1
---------	------

Target Details

Alternative Name: [TTC1 \(TTC1 Products\)](#)

Background: Name/Gene ID: TTC1

Synonyms: TTC1, TPR1, TPR repeat protein 1

Gene ID: 7265

NCBI Accession: [NP_003305](#)

UniProt: [Q99614](#)

Application Details

Application Notes: Optimal working dilution should be determined by the investigator.

Comment: Target Species of Antibody: Human

Restrictions: For Research Use only

Handling

Format: Lyophilized

Reconstitution: Distilled water

Concentration: Lot specific

Buffer: Lyophilized from PBS with 2 % sucrose

Handling Advice: Avoid repeat freeze-thaw cycles.

Storage: 4 °C,-20 °C

Storage Comment: Long term: -20°C, the use of 50% glycerol is recommended if storing aliquots in -20°C for long term use (up to 1 year)
Short term (less than 1 week): 4°C. Avoid freeze-thaw cycles.

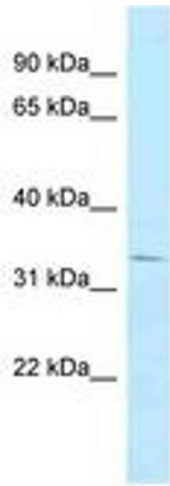


Image 1.