

Datasheet for ABIN674784  
**anti-CD51/CD61 antibody**

2 Images

10 Publications

[Go to Product page](#)

## Overview

Quantity:	100 µL
Target:	CD51/CD61 (ITGAV/ITGB3)
Reactivity:	Human, Mouse, Rat
Host:	Rabbit
Clonality:	Polyclonal
Conjugate:	This CD51/CD61 antibody is un-conjugated
Application:	Flow Cytometry (FACS), Western Blotting (WB), Immunofluorescence (Cultured Cells) (IF (cc)), Immunofluorescence (Paraffin-embedded Sections) (IF (p)), Immunohistochemistry (Frozen Sections) (IHC (fro)), ELISA, Immunohistochemistry (Paraffin-embedded Sections) (IHC (p))

## Product Details

Immunogen:	KLH conjugated synthetic peptide derived from human Integrin Alpha V + Beta 3
Isotype:	IgG
Cross-Reactivity:	Human, Mouse, Rat
Purification:	Purified by Protein A.

## Target Details

Target:	CD51/CD61 (ITGAV/ITGB3)
Alternative Name:	Integrin Alpha V + Beta 3 ( <a href="#">ITGAV/ITGB3 Products</a> )
Background:	Synonyms: CD51, MSK8, VNRA, VTNR, Integrin alpha-V, Vitronectin receptor subunit alpha, ITGAV, CD61, GP3A, BDPLT2, GPIIIa, BDPLT16, Integrin beta-3, Platelet membrane glycoprotein

## Target Details

IIIa, ITGB3

Background: ITAGV encodes integrin alpha chain V. Integrins are heterodimeric integral membrane proteins composed of an alpha chain and a beta chain. The I-domain containing integrin alpha V undergoes post-translational cleavage to yield disulfide-linked heavy and light chains, that combine with multiple integrin beta chains to form different integrins. Among the known associating beta chains (beta chains 1,3,5,6, and 8, 'ITGB1', 'ITGB3', 'ITGB5', 'ITGB6', and 'ITGB8'), each can interact with extracellular matrix ligands, the alpha V beta 3 integrin, perhaps the most studied of these, is referred to as the Vitronectin receptor (VNR). In addition to adhesion, many integrins are known to facilitate signal transduction. The ITGB3 protein product is the integrin beta chain beta 3. Integrins are integral cell-surface proteins composed of an alpha chain and a beta chain. A given chain may combine with multiple partners resulting in different integrins. Integrin beta 3 is found along with the alpha IIb chain in platelets. Integrins are known to participate in cell adhesion as well as cell-surface mediated signalling.

Gene ID: 3690, 3685

UniProt: [P05106](#), [P06756](#)

## Application Details

Application Notes: WB 1:300-5000  
ELISA 1:500-1000  
FCM 1:20-100  
IHC-P 1:200-400  
IHC-F 1:100-500  
IF(IHC-P) 1:50-200  
IF(IHC-F) 1:50-200  
IF(ICC) 1:50-200

Restrictions: For Research Use only

## Handling

Format: Liquid

Concentration: 1 µg/µL

Buffer: 0.01M TBS( pH 7.4) with 1 % BSA, 0.02 % Proclin300 and 50 % Glycerol.

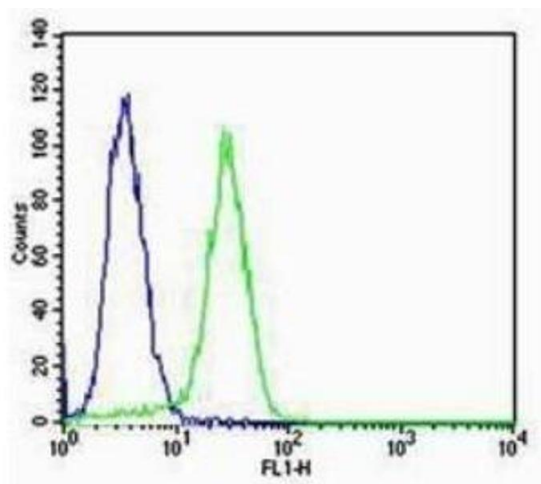
Preservative: ProClin

## Handling

Precaution of Use:	This product contains ProClin: a POISONOUS AND HAZARDOUS SUBSTANCE, which should be handled by trained staff only.
Storage:	4 °C, -20 °C
Storage Comment:	Shipped at 4°C. Store at -20°C for one year. Avoid repeated freeze/thaw cycles.
Expiry Date:	12 months

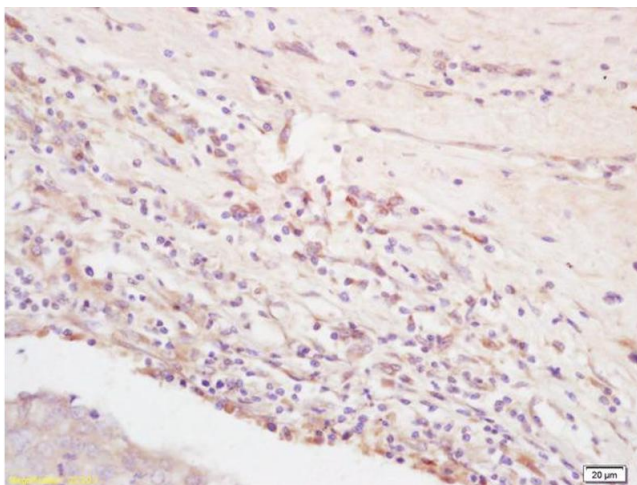
## Publications

Product cited in:	<p>Bian, Ma, Jain, Crane, Kebaish, Wan, Zhang, Edward Guo, Sponseller, Séguin, Riley, Wang, Cao: "Mechanotransduction activation of TGFβ maintains intervertebral disc homeostasis." in: <b>Bone research</b>, Vol. 5, pp. 17008, (2017) (<a href="#">PubMed</a>).</p> <p>Li, Xiong, Gong: "Lyn kinase enhanced hepatic fibrosis by modulating the activation of hepatic stellate cells." in: <b>American journal of translational research</b>, Vol. 9, Issue 6, pp. 2865-2877, (2017) (<a href="#">PubMed</a>).</p> <p>Chen, Chen, Kemper, Brigstock: "Pathways of production and delivery of hepatocyte exosomes." in: <b>Journal of cell communication and signaling</b>, (2017) (<a href="#">PubMed</a>).</p> <p>Li, Zhou, Li, Zhang, Shao, Tang, Tian: "Effects of Cationic Microbubble Carrying CD/TK Double Suicide Gene and αVβ3 Integrin Antibody in Human Hepatocellular Carcinoma HepG2 Cells." in: <b>PLoS ONE</b>, Vol. 11, Issue 7, pp. e0158592, (2017) (<a href="#">PubMed</a>).</p> <p>There are more publications referencing this product on: <a href="#">Product page</a></p>
-------------------	--



### Flow Cytometry

**Image 1.** MCF-7 cells probed with Rabbit Anti-Integrin Alpha V + Beta 3 (CD51+CD61) Polyclonal Antibody Alexa Fluor 488 Conjugated Secondary Antibody.



### Immunohistochemistry

**Image 2.** Formalin-fixed and paraffin embedded rat brain labeled with Rabbit Anti Integrin Alpha V + Beta 3 (CD51+CD61) Polyclonal Antibody, Unconjugated (ABIN674784) at 1:200 followed by conjugation to the secondary antibody and DAB staining