

Datasheet for ABIN6747846
anti-MRPL43 antibody (AA 130-179)



[Go to Product page](#)

1 Image

Overview

Quantity:	100 µL
Target:	MRPL43
Binding Specificity:	AA 130-179
Reactivity:	Human
Host:	Rabbit
Clonality:	Polyclonal
Conjugate:	This MRPL43 antibody is un-conjugated
Application:	Western Blotting (WB)

Product Details

Immunogen:	Synthetic peptide located between aa130-179 of human MRPL43 (Q8N983, NP_789762). Percent identity by BLAST analysis: Human, Gorilla, Gibbon, Monkey (100%), Marmoset (92%). Type of Immunogen: Synthetic peptide
Specificity:	Human MRPL43
Predicted Reactivity:	Percent identity by BLAST analysis: Human (100%).
Purification:	Immunoaffinity purified

Target Details

Target:	MRPL43
Alternative Name:	BMRP36a / MRPL43 (MRPL43 Products)

Target Details

Background:	Name/Gene ID: MRPL43
	Synonyms: MRPL43, BMRP36a, L43mt, MRP-L43
Gene ID:	84545
NCBI Accession:	NP_789762
UniProt:	Q8N983

Application Details

Application Notes:	Optimal working dilution should be determined by the investigator.
Comment:	Target Species of Antibody: Human
Restrictions:	For Research Use only

Handling

Format:	Lyophilized
Reconstitution:	Distilled water
Concentration:	Lot specific
Buffer:	Lyophilized from PBS with 2 % sucrose
Handling Advice:	Avoid repeat freeze-thaw cycles.
Storage:	4 °C, -20 °C
Storage Comment:	Long term: -20°C, the use of 50% glycerol is recommended if storing aliquots in -20°C for long term use (up to 1 year) Short term (less than 1 week): 4°C. Avoid freeze-thaw cycles.

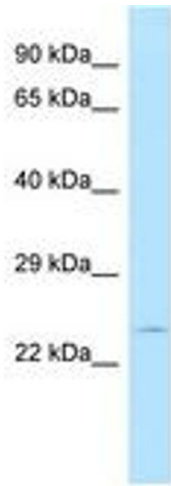


Image 1.