



[Go to Product page](#)

Datasheet for ABIN6747851  
**anti-TTC39B antibody (AA 378-427)**

1 Image

Overview

Quantity:	100 µL
Target:	TTC39B
Binding Specificity:	AA 378-427
Reactivity:	Human, Cow, Dog, Guinea Pig, Pig
Host:	Rabbit
Clonality:	Polyclonal
Conjugate:	This TTC39B antibody is un-conjugated
Application:	Western Blotting (WB)

Product Details

Immunogen:	Synthetic peptide located between aa378-427 of human TTC39B (NP_001161814). Percent identity by BLAST analysis: Human, Chimpanzee, Gorilla, Monkey (100%), Gibbon, Galago, Marmoset, Mouse, Rat, Rabbit, Horse (92%), Elephant, Dog, Bovine, Bat, Pig, Guinea pig (85%).  Type of Immunogen: Synthetic peptide
Specificity:	Human TTC39B
Predicted Reactivity:	Percent identity by BLAST analysis: Human (100%) Mouse, Rat, Rabbit, Horse (92%) Dog, Bovine, Pig, Guinea pig (85%).
Purification:	Immunoaffinity purified

## Target Details

---

Target:	TTC39B
Alternative Name:	TTC39B ( <a href="#">TTC39B Products</a> )
Background:	Name/Gene ID: TTC39B  Synonyms: TTC39B, C9orf52, TPR repeat protein 39B
Gene ID:	158219
NCBI Accession:	<a href="#">NP_001161814</a>
UniProt:	<a href="#">Q5VTQ0</a>

## Application Details

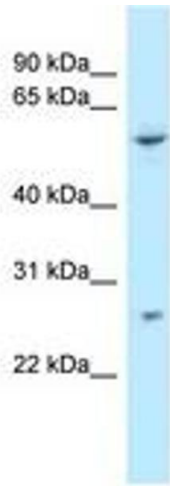
---

Application Notes:	Optimal working dilution should be determined by the investigator.
Comment:	Target Species of Antibody: Human
Restrictions:	For Research Use only

## Handling

---

Format:	Lyophilized
Reconstitution:	Distilled water
Concentration:	Lot specific
Buffer:	Lyophilized from PBS with 2 % sucrose
Handling Advice:	Avoid repeat freeze-thaw cycles.
Storage:	4 °C, -20 °C
Storage Comment:	Long term: -20°C, the use of 50% glycerol is recommended if storing aliquots in -20°C for long term use (up to 1 year)  Short term (less than 1 week): 4°C. Avoid freeze-thaw cycles.



**Image 1.**