



[Go to Product page](#)

Datasheet for ABIN6747852
anti-WBSCR22 antibody (C-Term)

1 Image

Overview

Quantity:	100 µL
Target:	WBSCR22
Binding Specificity:	C-Term
Reactivity:	Human, Rat, Mouse, Dog, Monkey
Host:	Rabbit
Clonality:	Polyclonal
Conjugate:	This WBSCR22 antibody is un-conjugated
Application:	Western Blotting (WB)

Product Details

Immunogen:	Synthetic peptide from C-Terminus of human WBSCR22 (C9K060, NP_001189489). Percent identity by BLAST analysis: Human, Gorilla, Gibbon, Monkey, Marmoset (100%), Rabbit, Sablefish, Stickleback (92%), Galago, Mouse, Rat, Elephant, Dog, Bat, Horse, Pig, Opossum, Turkey, Chicken, Platypus, Xenopus, Catfish (85%). Type of Immunogen: Synthetic peptide
Specificity:	Human WBSCR22
Predicted Reactivity:	Percent identity by BLAST analysis: Human (100%) Mouse, Rat, Dog, Chicken, Xenopus (85%).
Purification:	Immunoaffinity purified

Target Details

Target: WBSR22

Alternative Name: WBSR22 ([WBSR22 Products](#))

Background: Name/Gene ID: WBSR22

Synonyms: WBSR22, HUSSY-3, PP3381, HASJ4442, MERM1, WBMT

Gene ID: 114049

NCBI Accession: [NP_001189489](#)

UniProt: [O43709](#)

Application Details

Application Notes: Optimal working dilution should be determined by the investigator.

Comment: Target Species of Antibody: Human

Restrictions: For Research Use only

Handling

Format: Lyophilized

Reconstitution: Distilled water

Concentration: Lot specific

Buffer: Lyophilized from PBS with 2 % sucrose

Handling Advice: Avoid repeat freeze-thaw cycles.

Storage: 4 °C, -20 °C

Storage Comment: Long term: -20°C, the use of 50% glycerol is recommended if storing aliquots in -20°C for long term use (up to 1 year)

Short term (less than 1 week): 4°C. Avoid freeze-thaw cycles.

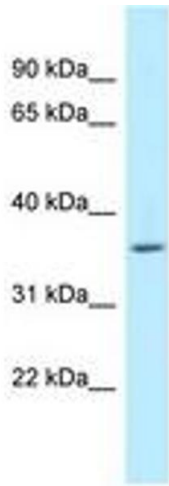


Image 1.