

Datasheet for ABIN6747854  
**anti-NECAB2 antibody (AA 242-291)**



[Go to Product page](#)

1 Image

## Overview

Quantity:	100 µL
Target:	NECAB2
Binding Specificity:	AA 242-291
Reactivity:	Human, Rat, Cow, Dog, Guinea Pig, Bat, Monkey
Host:	Rabbit
Clonality:	Polyclonal
Conjugate:	This NECAB2 antibody is un-conjugated
Application:	Western Blotting (WB)

## Product Details

Immunogen:	Synthetic peptide located between aa242-291 of human NECAB2 (Q7Z6G3, NP_061938). Percent identity by BLAST analysis: Human, Monkey, Marmoset, Bat (100%), Galago, Mouse, Horse (92%), Guinea pig (86%), Rat, Elephant, Dog, Bovine (85%).  Type of Immunogen: Synthetic peptide
Specificity:	Human NECAB2
Predicted Reactivity:	Percent identity by BLAST analysis: Mouse, Horse (92%) Guinea pig (86%) Rat, Dog, Bovine (85%).
Purification:	Immunoaffinity purified

## Target Details

---

Target:	NECAB2
Alternative Name:	EFCBP2 / NECAB2 ( <a href="#">NECAB2 Products</a> )
Background:	Name/Gene ID: NECAB2  Synonyms: NECAB2, Stip-2, EFCBP2, Neuronal calcium binding 2
Gene ID:	54550
NCBI Accession:	<a href="#">NP_061938</a>
UniProt:	<a href="#">Q7Z6G3</a>

## Application Details

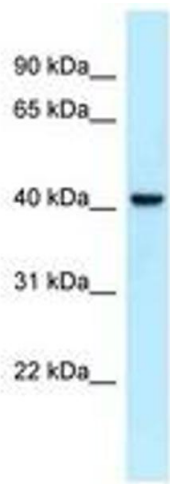
---

Application Notes:	Optimal working dilution should be determined by the investigator.
Comment:	Target Species of Antibody: Human
Restrictions:	For Research Use only

## Handling

---

Format:	Lyophilized
Reconstitution:	Distilled water
Concentration:	Lot specific
Buffer:	Lyophilized from PBS with 2 % sucrose
Handling Advice:	Avoid repeat freeze-thaw cycles.
Storage:	4 °C, -20 °C
Storage Comment:	Long term: -20°C, the use of 50% glycerol is recommended if storing aliquots in -20°C for long term use (up to 1 year)  Short term (less than 1 week): 4°C. Avoid freeze-thaw cycles.



**Image 1.**