



Datasheet for ABIN6747871  
**anti-SLC25A15 antibody (AA 20-69)**



[Go to Product page](#)

1 Image

Overview

Quantity:	100 µL
Target:	SLC25A15
Binding Specificity:	AA 20-69
Reactivity:	Human, Mouse, Rat, Cow, Dog, Guinea Pig, Bat, Monkey, Pig
Host:	Rabbit
Clonality:	Polyclonal
Conjugate:	This SLC25A15 antibody is un-conjugated
Application:	Western Blotting (WB)

Product Details

Immunogen:	Synthetic peptide located between aa20-69 of mouse Slc25a15 (Q9WVD5, NP_851842). Percent identity by BLAST analysis: Human, Chimpanzee, Gorilla, Gibbon, Monkey, Mouse, Rat, Panda, Dog, Bovine, Bat, Pig, Guinea pig (100%), Galago, Sheep, Horse, Opossum, Turkey, Zebra finch, Chicken, Platypus, Lizard (92%), Rabbit (85%).  Type of Immunogen: Synthetic peptide
Specificity:	Mouse SLC25A15
Predicted Reactivity:	Percent identity by BLAST analysis: Human, Mouse, Rat, Dog, Bovine, Pig (100%) Sheep, Chicken (92%).
Purification:	Immunoaffinity purified

## Target Details

---

Target:	SLC25A15
Alternative Name:	SLC25A15 / ORNT1 ( <a href="#">SLC25A15 Products</a> )
Background:	Name/Gene ID: SLC25A15 Subfamily: Mitochondrial carrier Family: Transporter  Synonyms: SLC25A15, D13S327, Ornithine transporter 1, ORNT1, HHH
Gene ID:	10166
NCBI Accession:	<a href="#">NP_851842</a>
UniProt:	<a href="#">Q9Y619</a>

## Application Details

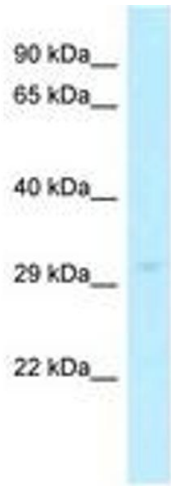
---

Application Notes:	Optimal working dilution should be determined by the investigator.
Comment:	Target Species of Antibody: Mouse
Restrictions:	For Research Use only

## Handling

---

Format:	Lyophilized
Reconstitution:	Distilled water
Concentration:	Lot specific
Buffer:	Lyophilized from PBS with 2 % sucrose
Handling Advice:	Avoid repeat freeze-thaw cycles.
Storage:	4 °C,-20 °C
Storage Comment:	Long term: -20°C, the use of 50% glycerol is recommended if storing aliquots in -20°C for long term use (up to 1 year) Short term (less than 1 week): 4°C. Avoid freeze-thaw cycles.



**Image 1.**