

Datasheet for ABIN6747874  
**anti-PRRT1 antibody (N-Term)**



[Go to Product page](#)

1 Image

### Overview

Quantity:	100 µL
Target:	PRRT1
Binding Specificity:	N-Term
Reactivity:	Human, Mouse, Rat, Pig, Rabbit, Cow, Horse, Bat, Monkey
Host:	Rabbit
Clonality:	Polyclonal
Conjugate:	This PRRT1 antibody is un-conjugated
Application:	Western Blotting (WB)

### Product Details

Immunogen:	Synthetic peptide from N-Terminus of rat Prrt1 (Q6MG82, NP_001027456). Percent identity by BLAST analysis: Human, Gorilla, Gibbon, Marmoset, Mouse, Rat, Elephant, Bovine, Bat, Rabbit, Horse, Pig (100%), Galago, Opossum (92%), Lizard (84%).  Type of Immunogen: Synthetic peptide
Specificity:	Rat PRRT1
Predicted Reactivity:	Percent identity by BLAST analysis: Human, Mouse, Rat, Bovine, Rabbit, Horse, Pig (100%).
Purification:	Immunoaffinity purified

### Target Details

Target:	PRRT1
---------	-------

## Target Details

---

Alternative Name: PRRT1 ([PRRT1 Products](#))

Background: Name/Gene ID: PRRT1

Synonyms: PRRT1, Dispanin subfamily D member 1, DSPD1, NG5, C6orf31, IFITMD7

Gene ID: 80863

NCBI Accession: [NP\\_001027456](#)

UniProt: [Q99946](#)

## Application Details

---

Application Notes: Optimal working dilution should be determined by the investigator.

Comment: Target Species of Antibody: Rat

Restrictions: For Research Use only

## Handling

---

Format: Lyophilized

Reconstitution: Distilled water

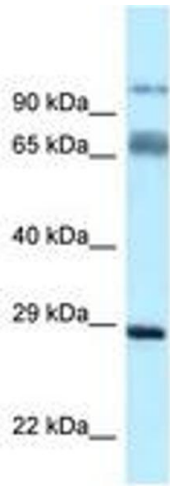
Concentration: Lot specific

Buffer: Lyophilized from PBS with 2 % sucrose

Handling Advice: Avoid repeat freeze-thaw cycles.

Storage: 4 °C, -20 °C

Storage Comment: Long term: -20°C, the use of 50% glycerol is recommended if storing aliquots in -20°C for long term use (up to 1 year)  
Short term (less than 1 week): 4°C. Avoid freeze-thaw cycles.



**Image 1.**